



ALIEN



INSTRUCTION
MANUAL

**ALIEN
CREATOR**



PATENTED

R20



SAFE HANDLING INSTRUCTIONS	4
DESCRIPTION AND TECHNICAL DATA	6
AMMUNITION	7
PISTOL HANDLING	8
STRIPPING AND ASSEMBLY	10
SIGHTS ADJUSTMENT	20
CLEANING AND MAINTENANCE	26
LIST OF PARTS	30
TROUBLESHOOTING	38
WARRANTY TERMS AND CONDITIONS	40

1**SAFE HANDLING
INSTRUCTIONS**

Read this instruction manual carefully and follow all of the safety instructions below, which will alert you to the possible risks associated with the use of this product. Should you ever lend or sell this firearm to another person, you must always provide them with this operating and maintenance manual. All manuals are also available on our KNOWLEDGE CENTER, where you'll also find a model overview, technical and operational tips, and videos covering our entire product line.

When handling the pistol, always follow the safety instructions and treat it as if it were loaded. The manufacturer is not liable for damages caused by improper handling, interference with the weapon mechanism, non-compliance with safety instructions, or damage to the weapon due to the use of unsuitable ammunition. Familiarize yourself thoroughly with these operating and maintenance instructions before handling the weapon for the first time.

AVOID THESE DANGEROUS ACTIVITIES IN PARTICULAR:

- Never point the firearm at anything you do not intend to shoot at
- Always point in a safe direction, even if the firearm is unloaded
- Always keep the pistol under control when in use and never leave it unattended
- Before use check the pistol for barrel obstructions, corrosion, damage, etc.
- Do not use hand loaded ammunition; use only original full metal jacket or semijacketed ammunition (FMJ, MJ, JHP, SP) of appropriate calibre and quality
- Never use the pistol when under the influence of intoxicating substances (alcohol, drugs, etc.)
- Use glasses and ear protection to protect your vision and hearing (shooting glasses, safety earmuffs, etc.)
- Do not put your finger on the trigger until you are ready to shoot
- Always consider the risks of your surrounding environment (ricocheting, poor visibility, etc.)
- Always make sure that the pistol is unloaded before handing it to or taking it from another person
- Never tamper with the mechanism of the pistol or modify the pistol parts in any way





-
- If you are unsure about the correct function of the firearm or its safety, contact the authorized service Center
 - Observe the rules and regulations of the shooting range or facility where you are using your pistol
 - Store the pistol unloaded and duly secured against the misuse of other persons, and keep it separate from the ammunition

THE PISTOL HAS THE FOLLOWING SAFETY FEATURES:

- Trigger safety
- Hammer safety notch
- Ultralight firing pin
- Out of battery fire block
- Hammer status indicator

CONTACT THE AUTHORIZED SERVICE CENTRE:

Laugo Arms Czechoslovakia s.r.o.,
Pražská 9, Blansko 678 01,
Czech Republic
service@laugoarms.com

DESCRIPTION AND TECHNICAL DATA

The ALIEN pistol is a semi-automatic pistol with a low bore axis and fixed barrel, using the principle of gas piston delayed blowback. It is equipped with a trigger mechanism with a hybrid inverted hammerless system (HIHS). The frame is divided. The upper frame is made of top-quality stainless steel, and the actual pistol grip is made of high-quality aerospace-grade aluminum alloy.

CHARACTERISTIC PROPERTIES:

- Lowest bore axis
- Gas piston delayed blowback
- Crisp, responsive trigger with a reduced pull weight minimal travel and positive short reset.
- One-click interchangeable top rails
- Non reciprocating upper rail with sights
- High-accuracy fixed bull barrel
- Semi integral slide with low centre of gravity
- Highly customizable modular design
- Interchangeable grips
- Hybrid inverted hammerless system (HIHS)

TECHNICAL DATA

Length	218mm/8'5"
Width	29mm/1'1"
Height	146mm/5'7"
Barrel length	124mm/4'8"
Weight	1072g/2.36lbs.
Weight with empty magazine	1193g/2.63lbs.
Trigger pull	15-20N (1.5-2.0kg/3.3-4.4lbs.)
Standard magazine capacity	17
Bore axis	1.7mm below the line of grip axis
Number of replaceable slide rails	Infinite
Recoil angle	½ compared to other models

AMMUNITION



Always use original ammunition complying with the standards for ammunition manufacturers and approved by CIP or SAAMI. Using other ammunition may cause damage to the firearm or injury to the shooter.

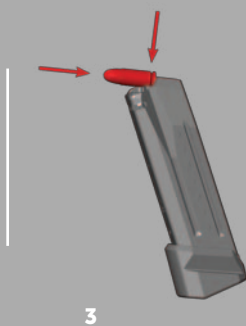
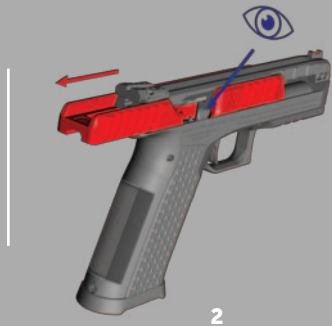
It is recommended to avoid pulling the trigger on an empty firearm, as this can cause unnecessary wear on your weapon over time. For safe, effective practice without live ammunition, we suggest using dummy rounds, also known as snap caps. These are designed to cushion the impact of the firing pin, protecting your firearm while allowing you to practice safely.

The firearm has been designed to use only ammunition of the following type: FMJ, MJ, JHP, SP. Using any other kind of ammunition may lead to irregular functioning of the firearm, and the manufacturer bears no responsibility for damages caused by the use of non-standard ammunition.

**USE OF NON-JACKETED AMMUNITION
IS STRICTLY PROHIBITED**

4**PISTOL HANDLING****POINT IN A SAFE DIRECTION!**

1. Remove the magazine by pushing the magazine catch (fig.1)
2. Pull the slide fully to the rear and make sure the chamber is empty (fig. 2)
3. Release the slide forward
4. With the firearm pointed in a safe direction, pull the trigger.





LOADING OF THE MAGAZINE

Hold the magazine with the mouth pointing upwards. Place a cartridge on the front of the follower and push it down and back until it touches the rear wall of the magazine (fig. 3). Place the next cartridge on top of the previous one and insert it in the same manner. If there are several cartridges in the magazine already, push the magazine column with the thumb of the hand holding the magazine.

The number of rounds in the magazine may be monitored through the holes on both sides of the magazine. Do not exceed the magazine capacity, as this may result in incorrect insertion of the first round into the chamber.

LOAD AND MAKE READY

Insert the loaded magazine into the pistol and make sure it is secured PROPERLY with the magazine release. Pull the slide to its rearmost position and release it. This causes the trigger and striking mechanism to be cocked and a round to be inserted into the chamber. The pistol is now ready to fire. When loading, always APPLY SAFETY INSTRUCTIONS and keep the pistol pointed in a safe direction!

RELOAD

After the last cartridge has been fired, the slide stays in its rear position. To continue shooting remove the empty magazine and insert a loaded one. Push the slide stop downwards (fig. 4) or pull the slide back and release it. The pistol is now loaded again and ready to fire.

UNLOAD AND SHOW CLEAR!

POINT IN A SAFE DIRECTION!

1. Remove the magazine by pressing the magazine catch.
2. Pull the slide fully to the rear and make sure the chamber is empty
3. Release the slide forward
4. Ensure you have a proper grip and shooting stance.
5. With the firearm pointed to the safe direction, pull the trigger.

5**STRIPPING AND
ASSEMBLY****POINT IN A SAFE DIRECTION!**

- Remove the magazine (fig. 1).
- Ensure the pistol is unloaded by pulling the slide to its rearmost position, and visually confirm that no ammunition is present in the chamber. (fig. 2).
- Pull the slide to its rearmost position and release it, ensuring that the cocking indicator is now protruding from the rear of your Alien. (fig. 3, 4).





3



4



5



6



7

- Apply pressure to the top rail locking pin (fig. 5) and pull it to its outermost position (fig. 6).
- With the thumb of your shooting hand, push hard on the rear of the top rail (fig. 7) until it has been released, and shifts forward.
- Pull forward (fig. 8) and up (fig. 9) to remove the top rail from the slide.
- Slightly pull the slide backward and up (fig. 11+12) to fully remove it. Remove the piston and recoil spring assembly together with the slide (fig. 12).



11



12



13



8

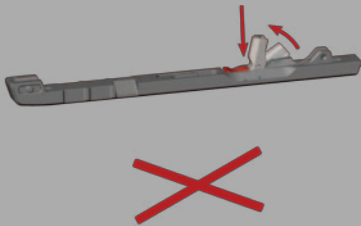


9



10

- Disassembly of your Alien to this point (fig. 13) is sufficient for regular maintenance. Magazine disassembly and cleaning is recommended for high round count shooters.
- Warning! Never release the hammer by manually manipulating or pressing the sear. This will cause damage to your Alien. (fig.14). The hammer should be in the cocked position for all disassembly and reassembly.



14



15

REASSEMBLY

- Insert the recoil spring assembly (fig. 16).
- First, insert the slide by hooking it onto the recoil spring assembly and then slightly pull it backwards and down (fig. 17).
- Position the top rail (fig. 18) and push it into its rearmost position until it clicks and aligns with the front locking hole (fig. 19) – until you feel a click.
- Push in the front locking pin (fig. 20)





STRIPPING THE MAGAZINE

The CREATOR magazine is equipped with a sliding base pad that is very easy to remove and this operation does not require any tools.

Move the base pad L (E04) to the disassembly position and then slightly push the baseplate forward. Then place your thumb above the baseplate to secure the spring and with your other hand, remove the baseplate completely. During this procedure, be very careful to prevent injury by the ejected spring. Wearing safety glasses is highly recommended.

Video - Magazine Maintenance can be found in our knowledge center website:

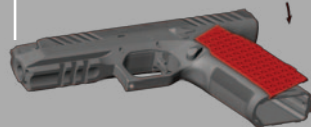
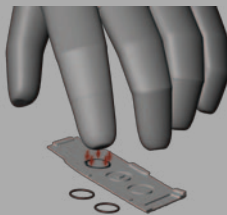
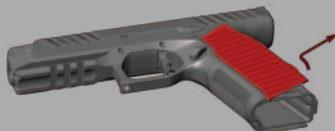


Do not disassemble any parts of the pistol other than those specifically addressed in this manual. If you believe the pistol requires adjustments or repairs, please take it to a certified workshop or contact an official service center. This will ensure your firearm receives proper care and remains in safe, reliable condition.

CREATOR GRIP

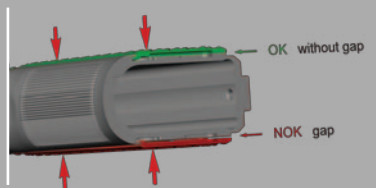
USER ASSEMBLY INSTRUCTIONS FOR THE CREATOR GRIP

- **Grip screw removal (fig. 1).**
Use a T10 wrench to loosen and remove the grip screw.
- **Magwell removal (fig. 2).**
Slide the magwell to the rearmost position and pull it downwards.
Then, pull it downwards from the pistol.
- **Backstrap removal (fig. 3).**
Grip the pistol firmly with your thumb and forefinger. Use your thumb to slide the backstrap downward along the magazine shaft to remove it.
- **Left grip panel removal.**
Use your thumbs to push the grip panel down approx. 1,2mm (fig. 4) then tilt it by approx. 10° and then remove it from the grip (fig. 5).
- **Right grip panel removal (fig. 6).**
Use your thumbs to push the grip panel down approx. 1,2mm (fig. 4) then tilt it by approx. 10° and then remove it from the grip (fig. 6).
- **This completes the disassembly of all modular grip components. (fig. 7).**
- **O-Ring assembly into the grip (fig. 7a).**
Press three of the provided O Rings into the corresponding grooves on the inside of each grip panel. Press each ring several times with your finger to ensure a full seal. Before installing onto the pistol, invert your O-ring installed grip panel and ensure all O-rings stay in their position, to confirm all O-rings are properly seated.
- **Securing selected areas (fig. 7b).**
Apply a drop of Loctite 243/242 adhesive to the areas indicated in fig. 7b. Complete this step only after you are satisfied with the format of your modular grip. If you are still testing different formats, skip this step and continue with the assembly.
- **Left grip panel installation (fig. 8).**
Insert the upper locking tab of the panel into the recess in the frame, then, press the grip upward toward the slide until it is securely seated in place (fig. 9)





9



10



11



12



13

-
- **Right grip panel installation (fig. 9).**
Use the same method as with the left grip. (fig. 8, 9)
 - **Visual check of the grips placement (fig. 10).**
Visually inspect to ensure there are no gaps or misalignments between the grip panels and the pistol grip.
 - **Backstrap installation (fig. 11).**
Hold both grip panels and align the backstrap with the yellow-marked mounting slots. Slide it in the direction of the arrows. Make sure the locking tabs on the grip panels are fully seated before applying any pressure. If you encounter resistance from the backstrap, do not force it into position.
 - **Magwell installation (fig. 12).**
Insert the locking tabs into the grip, then slide the magwell forward until it reaches a firm stop.
 - **Grip screw reinsertion (fig. 13).**
Apply a drop of Loctite 243/242 adhesive to the last few threads of the screw. Use a T10 key to tighten the screw to 1.3Nm (0.96lb*ft).



SIGHTS ADJUSTMENT

Your ALIEN has been factory zeroed for precise accuracy at a distance of 20 meters, aligning the point of impact with the point of aim. This applies to both the iron sights and the red dot sight (if included), ensuring dead-center accuracy right out of the box.

ATTENTION! WHEN ADJUSTING YOUR RED DOT OR IRON SIGHT, ENSURE THAT YOUR WEAPON IS UNLOADED AND SAFE!



OPERATION PROCEDURES

Red Dot Sight LAUGO 6MOA has two pressure buttons that allow setting 10 different illumination intensity levels.



OPERATION PROCEDURES

- To increase brightness, push the Up arrow button
- To decrease brightness, push the Down arrow button
- To switch the device on/off, hold any of the buttons for 2-4 seconds
- The device shuts off automatically after 3 hours of inactivity
- The device starts with the same level of brightness as if it was turned off

RED DOT ZEROING

Before PERFORMING ANY ADJUSTMENTS, you must loosen the locking screw located on the back of the red dot (marked LOCK – fig. 1).



The LAUGO 6MOA Red dot sight features adjustable elevation and windage dials. Each click moves the point of impact by 1MOA (1MOA = 2.9 cm @100 m).

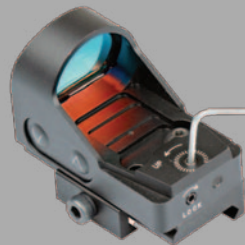
For adjusting after unlocking the adjustments, use the Allen wrench to adjust elevation (the screw on the back marked UP – fig. 2).

During adjustment you can hear clicks (1 click equals 1MOA). Adjustment of windage is similar and is done with the dial marked R (fig.3).

Once all the adjustments have been made, lock the adjustment with the screw marked LOCK before firing (fig. 1).



1



2



3

BATTERY (CR2032)

The battery compartment is a small tray located on the right side of the device. To insert the battery, pull out the tray using the notch, place the battery with the positive side facing up, and then slide and lock the tray back into the device body.



MAINTENANCE

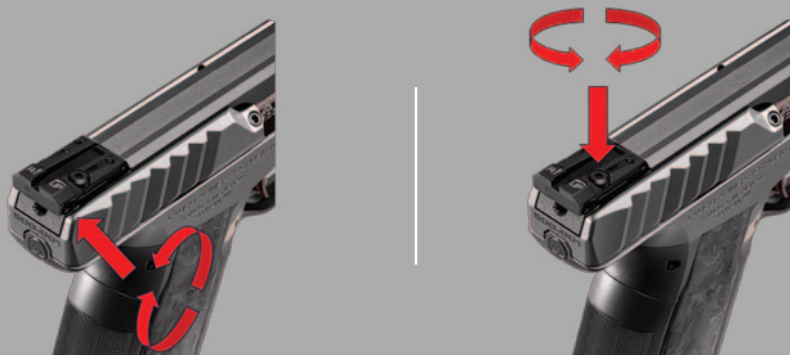
The LAUGO 6MOA Red Dot Sight is a precision optical device that, while robust, requires careful handling. Do not attempt to disassemble it yourself. For any cleaning or repair needs, send the sight to an authorised repair shop to prevent further damage. When not in use, keep the original cap on the sight to protect it from dust and debris. Clean mechanical components gently with a soft brush, and store the device in a dry, cool place. Avoid exposure to high temperatures, as they may damage internal materials and components, such as grease. To protect the lens coating, avoid excessive rubbing or using inappropriate cloths, which can cause permanent damage.

IRON SIGHTS ADJUSTMENT

The iron sights are adjustable for both elevation (vertical point of impact adjustment) and windage (horizontal point of impact adjustment). The sight adjustments use a reference point of 25 meters (~82 feet).

The windage can be adjusted via the screw on the right side of the rear sight - turning the screw clockwise will shift the point of impact to the right. Turning the screw counterclockwise will shift the point of impact to the left. One-click on the windage adjustment screw will shift the point of impact horizontally by 8 mm at 25 meters.

The elevation can be adjusted with the screw on the top of the rear sight. Turning the elevation screw counter-clockwise will shift the point of impact up. Turning the screw clockwise will shift the point of impact down. One-click on the elevation adjustment screw will shift the point of impact vertically by 10 mm at 25 meters.



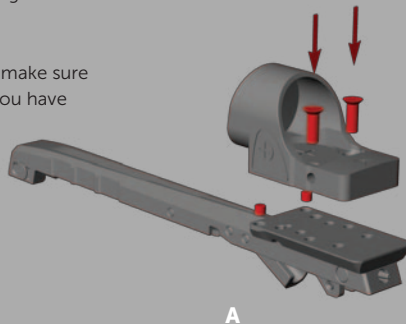
RED DOT INSTALLATION

The Alien Creator is equipped with a multi-optional mounting interface allowing you to attach a wide variety of red dots.

Before you start working on the actual red dot attachment, make sure that the red dot you want to use fits the platform and that you have proper locking pins and screws reflecting the red dot and mounting interface dimensions.

Then follow these instructions:

- **Insert the pins into the holes in the mounting interface.**
- **Place the red dot on the interface, fit it into the pins, and make sure it is seated well.**
- **Glue the screws with a drop of Loctite 243/242.**
- **Insert the screws into the red dot (fig. A).**
- **Tighten the screws using a torque of 1.3Nm (fig. A).**



List of Red Dots that can be used on the optic-ready upper rail with recommended screws:

C-MORE RTS2/RTS3	M4x10
LEUPOLD DELTA POINT	M4x16
VORTEX DEFENDER-ST	M4x9,8
VORTEX DEFENDER-XL	M4x9,8
SHIELD RMS/RMSx etc.	M4x8
TRIJICON SRO	CUSTOM M4x10,9
	HEAD DIAMETER 6,4mm *
HOLOSUN HS507 COMP etc.	CUSTOM M4x9
	HEAD DIAMETER 6,4mm **

* modified M4 screw with countersunk head - the outer diameter of the head is adjusted to 6.4mm and the length to 10.5mm

** modified M4 screw with countersunk head - the outer diameter of the head is adjusted to 6.4mm and the length to 8.6mm
Ask the importer for details.



R



9 x 19
A113393



LAUGO ARMS CZECHOSLOVAKIA
LAUGO ARMS USA LLC
DAYTON, OH

CLEANING AND MAINTENANCE



Your Alien Creator pistol should be cleaned after every use, as soon as possible after firing, and every time it has been exposed to moisture or any other harsh climatic condition. In temperate climates, clean the pistol at least once a year, in adverse climatic conditions at least once a month.

CHAMBER AND BORE CLEANING

If the pistol has not been used yet or if only a few rounds have been fired, wipe the bore and the chamber with a dry cloth attached to a cleaning rod or use a boresnake cleaner. Keep changing the cleaning cloth until it comes out clean.

If the bore is heavily soiled, apply a little cleaning fluid to the bore and chamber with a brush, leave for about 10 minutes (time required for the cleaning fluid to work may vary) and clean with a brush. Dry the bore and the chamber with a clean cloth and check that all combustion residue has been removed. Repeat the procedure if necessary.

Slide the cleaning stick and brush away from the chamber to avoid damaging the muzzle. Before changing the direction of cleaning, push the brush through the entire length of the barrel. If you change the direction of movement with the brush in the barrel, it may get stuck.

OTHER PARTS CLEANING

If the pistol is brand new or only a few rounds have been fired, wipe the bore and the chamber with a dry cloth attached to a cleaning rod or use a boresnake. Keep changing the cleaning cloth until it comes out clean. If the bore is heavily soiled, apply a carbon remover with a brush and leave for about 10 minutes (the time required for the cleaning fluid to work may vary), and clean with a brush. Dry the bore and the chamber with a clean cloth and check that all combustion residue has been removed. Repeat the procedure if necessary. Make sure you clean the barrel with both cleaning rods or brush only in one direction at a time. Slide the cleaning rod or a brush away from the chamber to avoid damaging the muzzle. Before changing the direction of cleaning, push the brush through the entire length of the barrel to avoid the cleaning tool being stuck in the barrel.



PISTON SYSTEM CLEANING

To keep your pistol functioning smoothly, it's essential to regularly clean the piston system. A high round count can create combustion residue that builds up in the piston chamber and on the piston itself, which, if neglected, can reduce performance over time.

Here's how to clean the piston system:

Apply Carbon Remover: Use the manufacturer-supplied Carbon Remover on the piston and piston chamber surfaces.

Wait 10 Minutes: Let the Carbon Remover sit for about 10 minutes to break down the residue.

Clean with the "L" Cleaner: Using the "L" cleaner from your accessories, scrub the piston chamber in a circular motion (see fig. 15 for reference).

Brush Away Residue: Use a brush to remove any leftover residue from the piston. If residue remains, use metal tools as needed for any stubborn buildup.

By following these steps regularly, you'll keep your pistol in top condition for reliable performance.

PRESERVATION

After cleaning, wipe down all parts with a cloth lightly dampened in preservation oil or, if preferred, apply a light coat of oil spray. Be sure to remove any excess oil to prevent buildup.

Dry the Bore: Before using your pistol, ensure the bore (barrel) is dry by running a clean cloth through it.

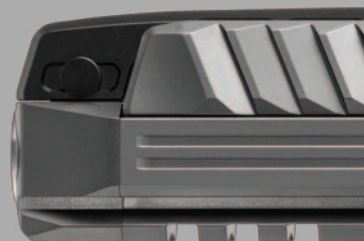
Cold Weather Tip: In cold conditions, avoid regular oil, as it can thicken. Either remove all oil or use a special cold-weather lubricant.

Long-Term Storage: If you plan to store your pistol for an extended period, especially in harsh conditions, apply preservation grease. Remember to clean it off thoroughly before using the pistol again.

Following these steps will help maintain your pistol's readiness and reliability in any conditions.

WASTE MANAGEMENT GUIDELINES

The materials used for the product and packaging, when used properly, do not have any negative effect on human health or the environment. In the event of the disposal of the product or its packaging, the metal parts (steel and non-ferrous metals), plastics, wood, paper, and cardboard are disposed of separately in containers designated for such purpose.



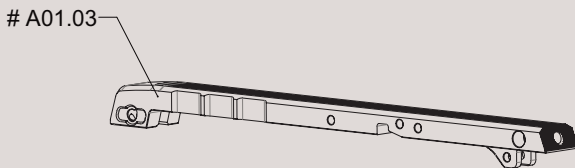
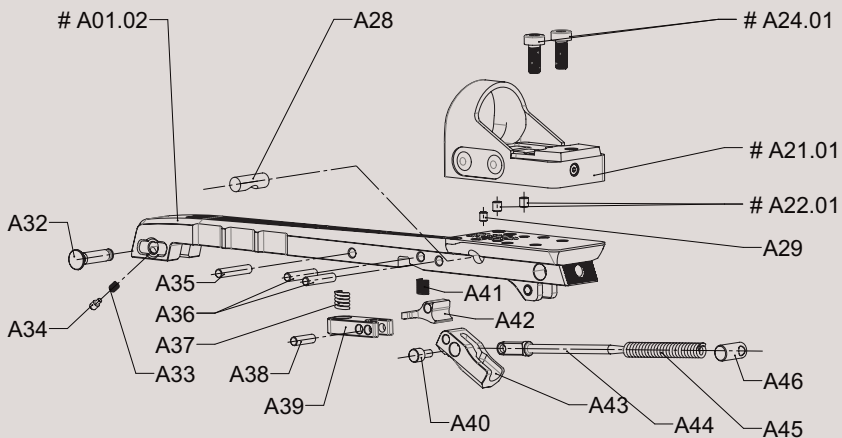
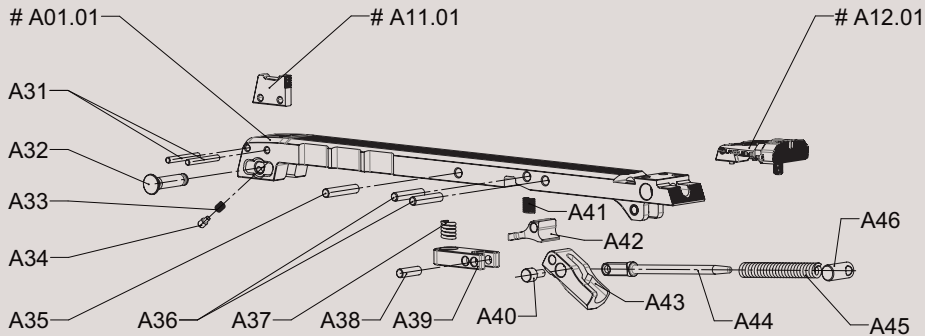


LIST OF PARTS

A

A01.01	002-L101	UPPER RAIL	A37	001-L320	PRESS SPRING
A01.02	002-L201	UPPER RAIL-COLLIMATOR	A38	B40-0004	PRESS PIN
A01.03	002-L301	UPPER RAIL-RETRO	A39	001-L250	PRESS
A01.04	002-L401	UPPER RAIL-LIMITED OPTICS	A40	001-L220	HAMMER BODY
A11.01	C01-0003	FRONT SIGHT	A41	001-L300	HAMMER CATCH SPRING
A11.02	C01-0004	FRONT SIGHT TARGET	A42	001-L240	HAMMER CATCH
A12.01	C01-0002	ADJUSTABLE REAR SIGHT	A43	001-L201	HAMMER
A12.02	C01-0005	ADJUSTABLE REAR SIGHT TARGET BLADE	A44	001-L210	HAMMER STUD
A21.01	C01-0001	COLLIMATOR C-MORE	A45	001-L310	HAMMER SPRING
A22.01	001-Z422	COLLIMATOR C-MORE PIN	A46	001-L230	ROLLER
A22.02	001-Z420	COLLIMATOR LEUPOLD DELTAPOINT-PIN			
A22.03	001-Z421	COLLIMATOR TRIJICON SRO AND SHIELD RMS-PIN			
A24.01	B10-0010	SCREW-C-MORE			
A24.02	C01-0030	SCREW-LEUPOD DELTAPOINT			
A24.03	002-Z450	SCREW-TRIJICON SRO			
A24.04	B10-0013	SCREW-SHIELD RMS			
A24.05	C01-0031	SCREW-HOLOSUN X2			
A28	001-L280	HAMMER BUFFER			
A29	B10-0009	HAMMER BUFFER SCREW			
A31	B40-0012	FRONT SIGHT PIN			
A32	001-L260	DISASSEMBLY PIN			
A33	001-Z202	FIRING PIN SPRING			
A34	001-L265	TENSION PIN			
A35	B40-0011	PRESS PIN			
A36	001-L275	HAMMER PIN			

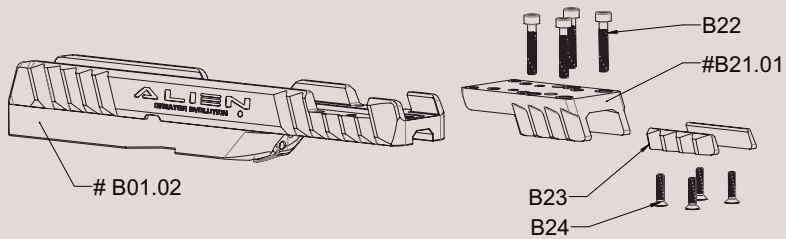
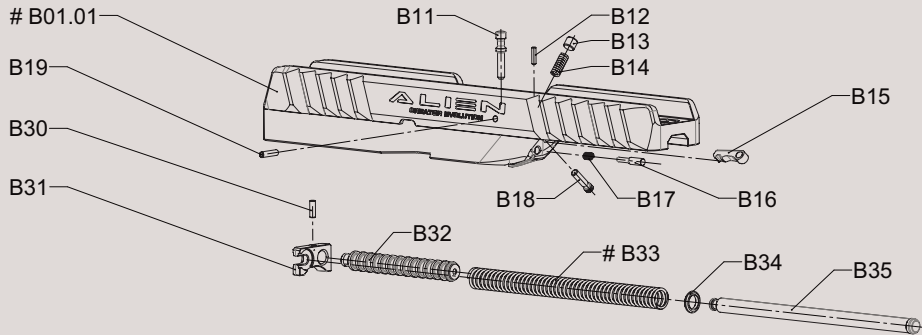
Many other interchangeable accessories are available for the Alien pistol, contact your distributor.



LIST OF PARTS**B**

B01.01	002-Z01X	SLIDE
B01.02	002-Z02X	SLIDE-RETRO
B11	001-Z301	TRIGGER BAR
B12	B40-0009	PIN
B13	001-Z104	EXTRACTOR SCREW
B14	001-Z103	EXTRACTOR SPRING
B15	001-Z101	EXTRACTOR
B16	001-Z201	FIRING PIN
B17	001-Z202	FIRING PIN SPRING
B18	001-Z102	EXTRACTOR PIN
B19	B40-0008	PIN
B21.01	001-Z401	MOUNT-AL
B21.02	001-Z402	MOUNT-STEEL
B22	B10-0007	SCREW
B23	002-Z410	STONES
B24	001-Z413	STONES SCREW
B30	B40-0010	PIN
B31	001-V001	CLIP
B32	001-V002	PISTON
B33.01	001-V005	RECOIL SPRING
B33.02	001-V006	RECOIL SPRING-LIGHT
B34	001-V004	SPRING BASE
B35	001-V003	GUIDE STUD

Many other interchangeable accessories are available for the Alien pistol, contact your distributor.

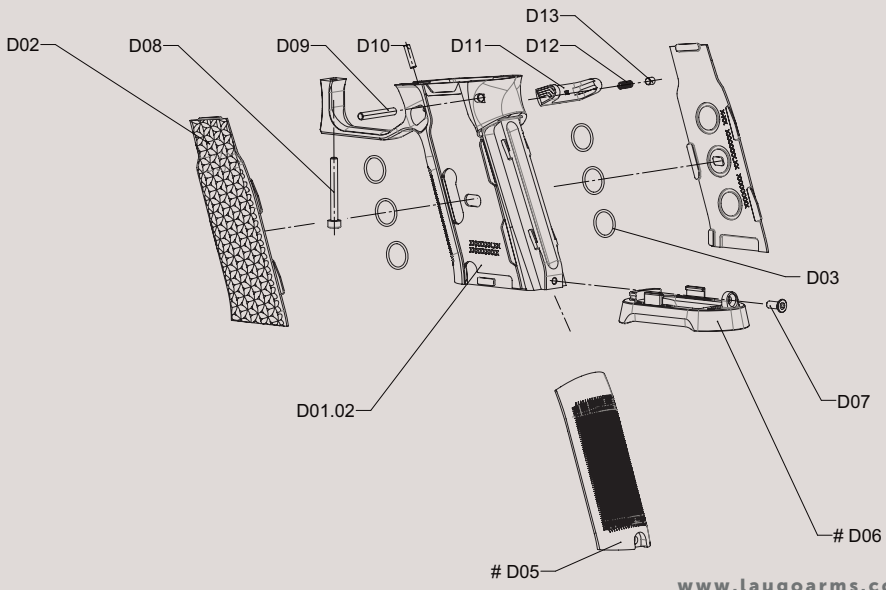
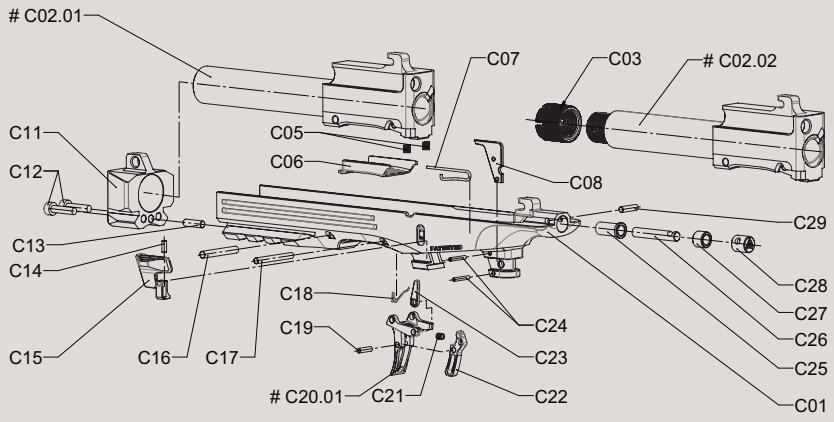


LIST OF PARTS**C**

C01	002-R01X	FRAME
C02.01	001-SR51	BARREL-ASSY
C02.02	001-SR52	BARREL-TACTICAL-ASSY
C03	001-R370	THREAD COVER
C05	001-R116	TRIGGER SPRING
C06	001-R221	HEATCOVER
C07	001-R211	SLIDE STOP SPRING
C08	001-R151	EJECTOR
C11	001-R101	HEAD
C12	B10-0005	SCREW
C13	B40-0004	PIN
C14	B40-0007	PIN
C15	002-R201	SLIDE STOP
C16	001-R231	BARREL PIN
C17	001-R241	TRIGGER PIN
C18	001-R136	DISCONNECTOR SPRING
C19	B40-0008	PIN
C20.01	002-R111	TRIGGER
C20.02	002-R112	TRIGGER-SMOOTH
C21	001-R126	SAFETY SPRING
C22	001-R121	TRIGGER SAFETY
C23	001-R132	DISCONNECTOR
C24	B40-0005	PIN
C25	001-R181	BUFFER COVER
C26	001-R171	BUFFER
C27	001-R191	BUFFER STOP
C28	001-R161	BUFFER TUBE
C29	B40-0006	PIN

D

D01.02	002-P015	PISTOL GRIP-AL
D02.01	002-P600	LEFT-RIGHT-GRIP-S-G10-SET
D02.02	002-P601	LEFT-RIGHT-GRIP-S-AL-SET
D02.03	002-P602	LEFT-RIGHT-GRIP-S-CARBON-SET
D02.04	002-P610	LEFT-RIGHT-GRIP-S-TAPE-SET
D02.05	002-P603	LEFT-RIGHT-GRIP-S-BRASS-SET
D02.11	002-P630	LEFT-RIGHT-GRIP-M-G10-SET
D02.12	002-P631	LEFT-RIGHT-GRIP-M-AL-SET
D02.13	002-P632	LEFT-RIGHT-GRIP-M-CARBON-SET
D02.14	002-P640	LEFT-RIGHT-GRIP-M-TAPE-SET
D02.15	002-P633	LEFT-RIGHT-GRIP-M-BRASS-SET
D02.21	002-P660	LEFT-RIGHT-GRIP-L-G10-SET
D02.22	002-P661	LEFT-RIGHT-GRIP-L-AL-SET
D02.23	002-P662	LEFT-RIGHT-GRIP-L-CARBON-SET
D02.24	002-P663	LEFT-RIGHT-GRIP-L-BRASS-SET
D03.01	B60-0001	O-RING
D05.01	002-P230	REAR GRIP-M
D05.02	002-P242	REAR-GRIP-M-TAPE-SET
D05.03	002-P260	REAR-GRIP-L
D06.01	002-P330	MAGWELL-M
D06.02	002-P360	MAGWELL-L
D06.03	002-P302	MAGWELL-IPSC
D06.04	002-P373	MAGWELL-XL
D07	B10-0001	SCREW
D08	001-P101	PISTOL GRIP-SCREW
D09	B40-0003	PIN
D10	B40-0006	PIN
D11.01	002-P801	MAGAZINE CATCH
D11.02	002-P802	MAGAZINE CATCH-LEFT
D12	001-P851	MAGAZINE CATCH SPRING
D13	B40-0001	PIN



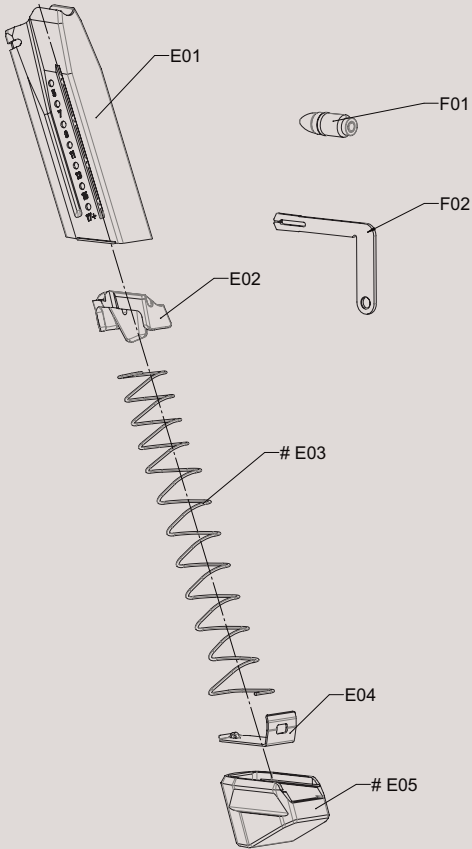
LIST OF PARTS

E

E01	C02-0001	MAGAZINE BODY 17
E02	C02-0003	FOLLOWER
E03.01	C02-0004	MAGAZINE SPRING 17
E03.02	C02-0005	MAGAZINE SPRING 22
E04	C02-0002	BASE PAD L
E05.01	002-X010	MAGAZINE BASE 17-CREATOR
E05.02	001-X001	MAGAZINE BASE 17-ALIEN
E05.03	002-SX04	MAGAZINE EXTENSION 22 RD

F

F01	001-SU01	TRAINING CARTRIDGE
F02	001-U005	CLEANER





TROUBLESHOOTING

If the firearm is used and maintained properly, malfunctions are rare. However, should one occur, please follow these instructions carefully. Malfunctions during firing increase the risk of accidental discharge, so it's essential to follow all safety guidelines strictly.

SAFETY PRECAUTIONS:

Keep the firearm pointed in a safe direction at all times.

Do not turn the firearm toward yourself or others.

Never place your hands in front of the muzzle.

If you use this pistol for personal defense or duty, we recommend practicing malfunction clearance techniques with "training cartridges." This practice can prepare you to handle potential malfunctions safely and confidently.

<p>Cartridge is not fed into the chamber or the slide is not locked.</p>	<p>Magazine is not fully inserted or is damaged.</p> <p>The firearm or the cartridges are fouled (dirty) or too much lubricant has been used or there is a random object in the ejection port or chamber.</p>	<p>Insert the magazine properly or use a different magazine.</p> <p>Clean the firearm and the cartridges dry or slightly lubricate.</p>
<p>Misfire.</p>	<p>Ammunition may be faulty.</p> <p>Firing pin hole is fouled or unsuitable lubricant has been used in low ambient temperature.</p>	<p>If the firearm does not fire after 1 minute, unload the firearm in a safe manner.</p> <p>Clean the firing pin hole and the firing pin or use a lubricant designed for low temperatures.</p> <p>Unload the firearm completely. Carefully check that no bullet is jammed in the barrel.</p>
<p>The cartridge case has not been ejected.</p>	<p>The chamber, extractor, or ammunition are dirty or unsuitable lubricant has been used in low temperatures.</p>	<p>Clean the firearm dry or lubricate slightly with suitable lubricant. Use clean or new ammunition.</p>

If the malfunction cannot be cleared in any manner described above, or if the firearm is damaged due to rough treatment or due to a fall, entrust it to a specialized workshop for inspection and repair

WARRANTY TERMS AND CONDITIONS

This product is covered by a warranty under the following terms and conditions:

SUBJECT OF WARRANTY AND THE WARRANTY PERIOD

The warranty covers only defects in material and defects caused by the manufacturer. If the product is used for the purpose for which it is intended and as described in the instruction manual, Laugo Arms Czechoslovakia s.r.o. guarantees faultless function of the product for the entire warranty period.

THE WARRANTY DOES NOT COVER:

- mechanical damage caused by the user or parts of the product affected by such damage
- damage and faults caused by negligent maintenance, failure to comply with the instruction manual and with the safety instructions, incorrect use, operating error, or unqualified intervention
- damage caused by storage in an unsuitable environment
- damage caused by using the product
- environmental damage
- defects that occurred due to modifications of the product and interference thereof performed outside Laugo Arms Czechoslovakia s.r.o. or outside an authorized service of Laugo Arms Czechoslovakia s.r.o., which resulted in a price reduction of the product
- defects caused by the use of non original parts
- defects caused by ammunition not complying with the CIP or SAAMI regulations, or not approved by the manufacturer
- wear and tear caused by normal use or damage caused by rough handling
- products that have not complied with the terms and conditions of the warranty

The warranty period provided by Laugo Arms Czechoslovakia s.r.o. for all products is 24 months or 30,000 rounds. The warranty period begins from the day of the sale to the customer.

During the warranty period, all defects, unless specified in the list of exceptions in this warranty card, shall be removed free of charge. If any part of the product is replaced under warranty during the warranty period, it becomes part of the product and is therefore covered by the warranty until the warranty period ends.



The warranty is valid under the condition that all repairs are performed by Laugo Arms Czechoslovakia s.r.o. or an authorized service center. The warranty period will be extended by the time the product is in repair.

Service Recommendation: The manufacturer strongly recommends a service check at an authorized service center or at the manufacturer's facility every 30,000 rounds, with the replacement of any worn parts as needed. If this service check is not performed by an authorized center or directly by the manufacturer, the warranty will be void. In this case, the manufacturer assumes no responsibility for any damage or injury caused by the product beyond its recommended service life.

WARRANTY TERMS AND CLAIMS

The customer is obliged to thoroughly inspect the product at the time of purchase, including the documentation, and to become familiar with its operation. In particular, the warranty certificate must be duly completed, stating the date of purchase, and proof of purchase (receipt) must be present. The customer is entitled to have the defect removed during the warranty period by Laugo Arms Czechoslovakia s.r.o. as the manufacturer, as well as by any authorized service of Laugo Arms Czechoslovakia s.r.o., regardless of where the product was purchased.

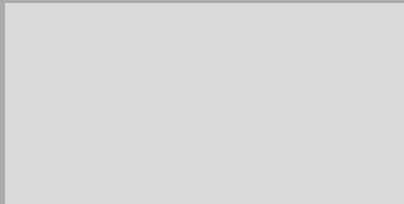
The warranty claim can be made only after submitting the original warranty card with the name of the store, the date of sale, and the original proof of purchase of the product (receipt), which states the type designation of the product, date of sale and name of the store.

If the claimant has acquired the product from a previous owner during the warranty period and his or her name is not stated on the original proof of purchase (receipt), he or she may file a claim upon submitting an agreement on the assignment of rights ensuing from the warranty, concluded with the first customer. In the event of non-acknowledgment of the claim, Laugo Arms Czechoslovakia s.r.o. may claim compensation from the claimant for the costs associated with the claim procedure.

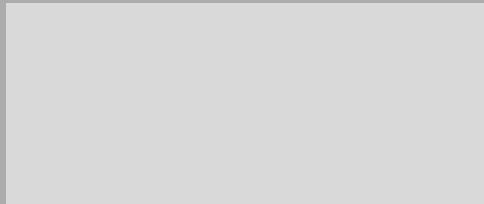
The period for settling a claim is 30 calendar days from the date of the claim being filed. A claim being filed means the physical handover/delivery of the product to an authorized service or to Laugo Arms Czechoslovakia s.r.o., unless agreed otherwise with the claimant.

Each warranty repair must be recorded in the warranty card.

Date of sale



Store stamp



rev. 12/2024





www.laugoarms.com



WEB



INSTAGRAM



FACEBOOK



YOUTUBE