

ALIEN



INSTRUCTION MANUAL **CREATOR LIMITED OPTIC**



INSTRUCTIONS FOR THE SAFE HANDLING OF THE PISTOL	4
PISTOL DESCRIPTION AND TACTICAL AND TECHNICAL DATA	6
AMMUNITION	7
HANDLING THE PISTOL	8
STRIPPING AND ASSEMBLY INSTRUCTIONS	10
ALIEN 22rd EXTENDED MAGAZINE DISASSEMBLY INSTRUCTIONS	18
INSTRUCTIONS FOR MOUNTING THE LIMITED OPTICS THUMB REST	20
CLEANING AND MAINTENANCE	21
LIST OF PARTS	24
TROUBLESHOOTING	28
WARRANTY TERMS AND CONDITIONS	29

INSTRUCTIONS FOR THE SAFE HANDLING OF THE PISTOL

Read this instruction manual carefully and follow all of the safety instructions below, which will alert you to the possible risks associated with the use of this product. Should you ever lend or sell this firearm to another person, you must always provide them with this operating and maintenance manual. The manual is also available in electronic format on the manufacturer's website.

When handling the pistol, always follow the safety instructions and treat it as if it were loaded. The manufacturer is not liable for damages caused by improper handling, interference with the weapon mechanism, non-compliance with safety instructions, or damage to the weapon due to the use of unsuitable ammunition. Familiarize yourself thoroughly with these operating and maintenance instructions before handling the weapon for the first time.

AVOID THESE DANGEROUS ACTIVITIES IN PARTICULAR:

- Never point the firearm at anything you do not intend to shoot at
- Always point in a safe direction, even if the firearm is unloaded
- Always keep the pistol under control when in use and never leave it unattended
- Check the pistol before using it (barrel obstructions, corrosion, damage, etc.)
- Do not use hand-loaded ammunition; use only original full metal jacket or semijacketed ammunition (FMJ, MJ, JHP, SP) of appropriate calibre and quality
- Never use the pistol when under the influence of intoxicating substances (alcohol, drugs, etc.)
- Use glasses and ear protection to protect your vision and hearing (shooting glasses, safety earmuffs, etc.)
- Do not put your finger on the trigger until you are ready to shoot
- Always consider the risks of your surrounding environment (ricocheting, poor visibility, etc.)
- Always make sure that the pistol is unloaded before handing it to or taking it from another person
- Never tamper with the mechanism of the pistol or modify the pistol parts in any way
- If you are unsure about the correct functioning of the firearm or its safety, contact the authorized service centre



- Observe the rules and regulations of the shooting range or facility where you are using your pistol
- Store the pistol unloaded and duly secured against the misuse of other persons, and keep it separate from the ammunition

THE PISTOL HAS THE FOLLOWING SAFETY FEATURES:

- Trigger safety
- Drop safety block
- Ultralight firing pin
- Out-of-battery fire block
- Striker status indicator

CONTACT THE AUTHORIZED SERVICE CENTER:

Laugo Arms Czechoslovakia s.r.o.,
Pražská 9, Blansko 678 01,
Czech Republic

PISTOL DESCRIPTION AND TACTICAL AND TECHNICAL DATA

The ALIEN pistol is a semi-automatic firearm with a low bore axis and fixed barrel, using the principle of gas piston delayed blowback, intended for shooting at a distance of up to 50 metres. It is equipped with a trigger mechanism with a hybrid inverted hammerless system (HIHS). The pistol frame is divided, the upper functional part is made of high strength-stainless steel, and the lower gripping part is available in high-quality aerospace-grade aluminium composite or in polymer.

CHARACTERISTIC PROPERTIES:

- Lowest bore axis
- Gas piston delayed blowback
- Short and light trigger pull
- One-click exchangeable rails
- Non-reciprocating upper part of the slide with sights
- Bull Barrel type high-accuracy fixed barrel
- Semi-integral slide with low centre of gravity
- Highly customizable modular design
- Exchangeable pistol grip panels
- Hybrid inverted hammerless system (HIHS)

TACTICAL TECHNICAL DATA

Length	218 mm/8,5"
Width	59 mm/2,3"
Height	146 mm/5,7"
Barrel length	124 mm/4,8"
Weight	1104 g/2.43 lbs.
Weight with empty magazine	1193 g/2.63 lbs.
Trigger pull	15N (3.3–3.4lbs.)
Standard magazine capacity	22
Bore axis	1.7 mm below the line of grip axis
Number of replaceable slide rails	infinite
Recoil angle	½ compared to other models

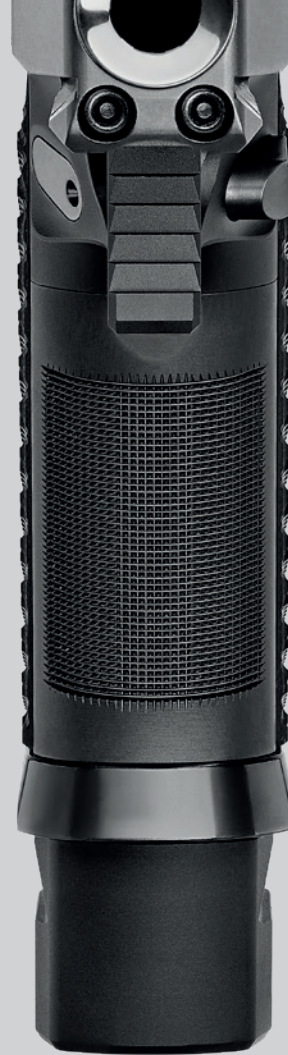
AMMUNITION

Always use original ammunition complying with the standards for ammunition manufacturers and approved by CIP (Permanent International Commission for the Proof of Small Arms) or SAAMI (Sporting Arms and Ammunition Manufacturers' Institute). Using other ammunition may cause damage to the firearm or injury to the shooter.

The manufacturer recommends against firing an empty firearm (without ammunition), as this may cause unwanted wear and tear on the weapon. For the so-called "dry firing practice", the use of dummy rounds suitable for such purpose is recommended.

The firearm has been designed to use only ammunition of the following type: FMJ, MJ, JHP, SP. Using any other kind of ammunition may lead to irregular functioning of the firearm, and the manufacturer bears no responsibility for damages caused by the use of non-standard ammunition.

**USE OF NON-JACKETED AMMUNITION
IS STRICTLY PROHIBITED.**



4

HANDLING THE PISTOL

Hold the pistol in your right (or left) hand and push the magazine release with your thumb (fig. 1). The magazine will release and drop out of the frame. Always comply with the principles of safe handling of a firearm:

POINT IN A SAFE DIRECTION!

1. Remove the magazine (fig. 1)
2. Pull the slide fully to the rear and make sure the chamber is empty (fig. 2)
3. Release the slide forward
4. Pull the trigger (dry fire)



Hold the magazine with the mouth pointing upwards. Place a cartridge on the front of the follower and push it down and back until it touches the rear wall of the magazine (fig. 3). Place the next cartridge on top of the previous one and insert it in the same manner. If there are several cartridges in the magazine already, push the magazine column with the thumb of the hand holding the magazine.

The number of cartridges in the magazine may be monitored through the holes. Do not exceed the magazine capacity, as this may result in incorrect insertion of the first cartridge into the chamber.

Insert the loaded magazine into the pistol and make sure it is secured with the magazine release. Grasp the pistol grip with one hand and grip the serrated part of the slide with the thumb and index finger of the other hand. Pull the slide to its rearmost position and release it. To cock the pistol, either the front (fig. 2) or the rear (fig. 4) serrations may be used. This causes the trigger and striking mechanisms to be drawn and a cartridge to be inserted into the chamber. The pistol is now ready to fire. When loading, always keep the pistol pointed in a safe direction!

After the last cartridge has been fired, the slide stays in its rear position. Remove the empty magazine and insert a loaded one. With your shooting hand, either push the slide stop downwards (fig. 5) or use the other hand to pull the slide back and release it. The pistol is loaded again and ready to fire.



1



2



3

Unloading the pistol**POINT IN A SAFE DIRECTION!**

1. Remove the magazine
2. Pull the slide fully to the rear and make sure the chamber is empty
3. Release the slide forward
4. Pull the trigger (dry fire)

STRIPPING AND ASSEMBLY INSTRUCTIONS

POINT IN A SAFE DIRECTION!

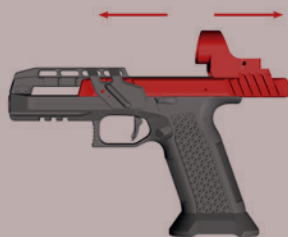
- Remove the magazine (fig. 1).
- Ensure the pistol is unloaded by pulling the slide to its rearmost position, and visually confirming that no ammunition is present in the chamber. (fig. 2).
- Pull the slide to its rearmost position and release it, ensuring that the cocking indicator is now protruding from the rear of your Alien. (fig. 4, 5).
- Apply pressure to the top rail locking pin (fig. 6) and pull it to its outermost position (fig. 7).
- With the thumb of your shooting hand, push hard on the rear of the top rail (fig. 8) until it has been released, and shifts forward.
- Slightly pull the slide backwards (fig. 9) and up (fig. 10) and remove the slide and top rail from the pistol frame.
- Pull forward (fig. 11) and up (fig. 12+13) to remove the top rail from the slide.
- Remove the piston and recoil spring assembly (fig. 14).



1



2



4



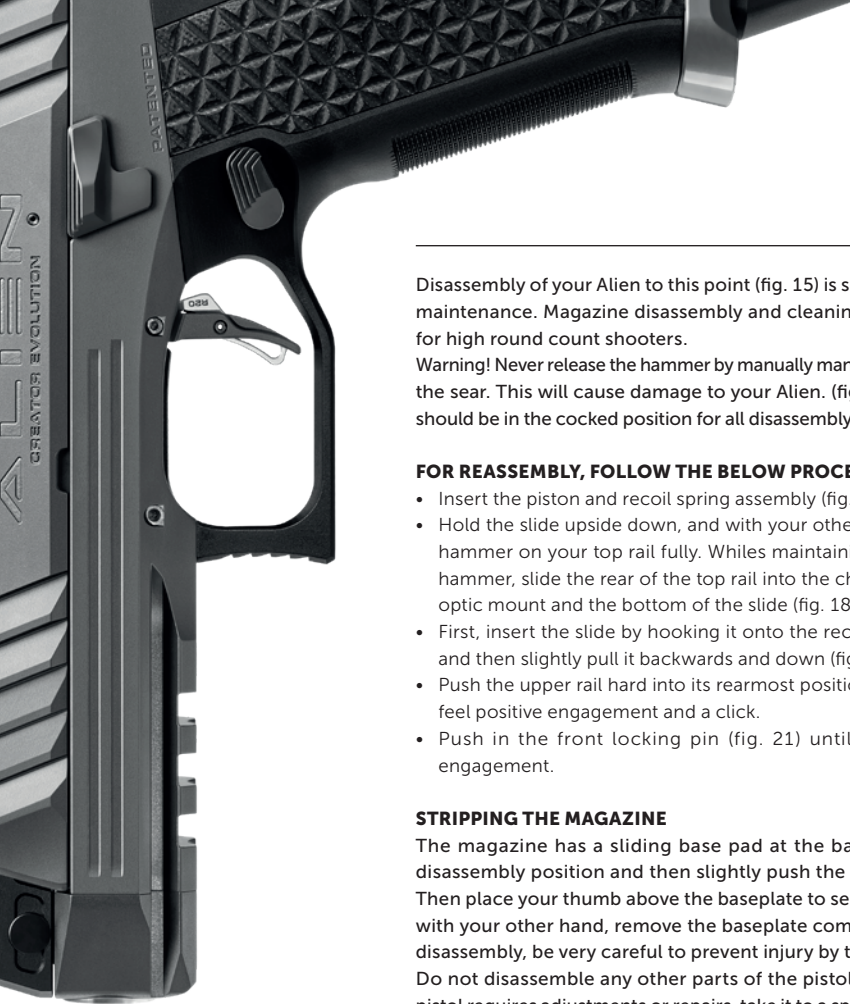
5



6



7



Disassembly of your Alien to this point (fig. 15) is sufficient for regular maintenance. Magazine disassembly and cleaning is recommended for high round count shooters.

Warning! Never release the hammer by manually manipulating or pressing the sear. This will cause damage to your Alien. (fig. 16). The hammer should be in the cocked position for all disassembly and reassembly.

FOR REASSEMBLY, FOLLOW THE BELOW PROCEDURE:

- Insert the piston and recoil spring assembly (fig. 17).
- Hold the slide upside down, and with your other hand, depress the hammer on your top rail fully. While maintaining pressure on the hammer, slide the rear of the top rail into the channel between the optic mount and the bottom of the slide (fig. 18).
- First, insert the slide by hooking it onto the recoil spring assembly and then slightly pull it backwards and down (fig. 19).
- Push the upper rail hard into its rearmost position (fig.20), until you feel positive engagement and a click.
- Push in the front locking pin (fig. 21) until you feel positive engagement.

STRIPPING THE MAGAZINE

The magazine has a sliding base pad at the back. Move it to the disassembly position and then slightly push the baseplate forward. Then place your thumb above the baseplate to secure the spring and with your other hand, remove the baseplate completely. During this disassembly, be very careful to prevent injury by the ejected spring. Do not disassemble any other parts of the pistol. If you believe the pistol requires adjustments or repairs, take it to a specialized workshop.



8



9



10



11



12



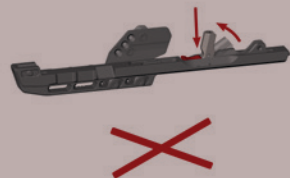
13



14



15



16

USER ASSEMBLY INSTRUCTIONS FOR THE CREATOR GRIP

- **Grip screw removal (fig. 1).**
Use a T10 wrench to loosen and remove the grip screw.
- **Magwell removal (fig. 2).**
Slide the magwell to the rear of the pistol, until you reach the stop. Then, pull it downwards from the pistol.
- **Backstrap removal (fig. 3).**
Squeeze the pistol grips with your thumb and forefinger and slide out the backstrap in the direction of the arrow.
- **Frontstrap removal (fig. 4).**
Squeeze pistol grips between your thumb and forefinger and slide out the frontstrap in the direction of the arrow.
- **Left grip panel removal (fig. 5).**
Tilt the left grip by approx. 10° and then remove it from the grip.
- **Right grip panel removal (fig. 6).**
Tilt the right grip by approx. 10° and then remove it from the grip.
- **This completes the disassembly of all modular grip components. (fig. 7).**
- **O-Ring assembly into the grip (fig. 7a).**
Press three of the provided O-Rings into the corresponding grooves on the inside of each grip panel. Press each ring several times with your finger to ensure a full seal. Before installing onto the pistol, invert your O-ring installed grip panel and ensure all O-rings stay in their position, to confirm all O-rings are properly seated.
- **Securing selected areas (fig. 7b).**
Apply a drop of Loctite 234 adhesive to the areas indicated in fig. 7b. Complete this step only after you are satisfied with the format of your modular grip. If you are still testing different formats, skip this step and continue with the assembly.



1



4



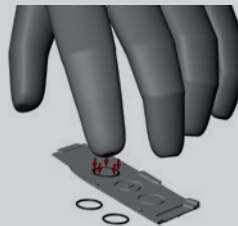
5/6



7



2



7a



7b



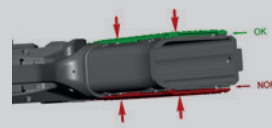
8



3



9



10



11



12



13



16

- **Left grip panel installation (fig. 8).**
Insert the upper locking tab of the panel into the recess in the frame, then press the grip onto the pistol.
- **Right grip panel installation (fig. 9).**
Insert the top locking tab of the panel into the recess in the frame, then press the panel onto the grip.
- **Checking the correct placement of the grips (fig. 10).**
Hold the pistol grip so that the panels are still squeezed between the thumb and forefinger of the right hand. Visually ensure that there are no gaps between the grip panels and the grip, especially towards the bottom of the grip assembly.
- **Frontstrap Installation (fig. 11).**
Pinch the installed grip panels. Align the frontstrap with the mounting slots, shown in red. The locking tabs, shown in yellow, must seat fully into the mounting slots of the grip module before installation. Proceed carefully; do not force the frontstrap.
- **Backstrap installation (fig. 12).**
Pinch both grip panels firmly. Align the backstrap with the mounting slots, shown in yellow, and slide in the direction of the arrows. Ensure that the locking tabs of the backstrap are seated fully before applying any force. If the frontstrap is providing any resistance, do not force it into position.
- **Magwell installation (fig. 13).**
Insert the locking tabs into the grip, then slide the magwell forward until it stops.
- **Grip screw reinsertion (fig. 14).**
Apply a drop of Loctite 242 adhesive to the last few threads of the fastener. Use a T10 key to tighten the screw to 1.3 Nm (0.96 lb ft).



17

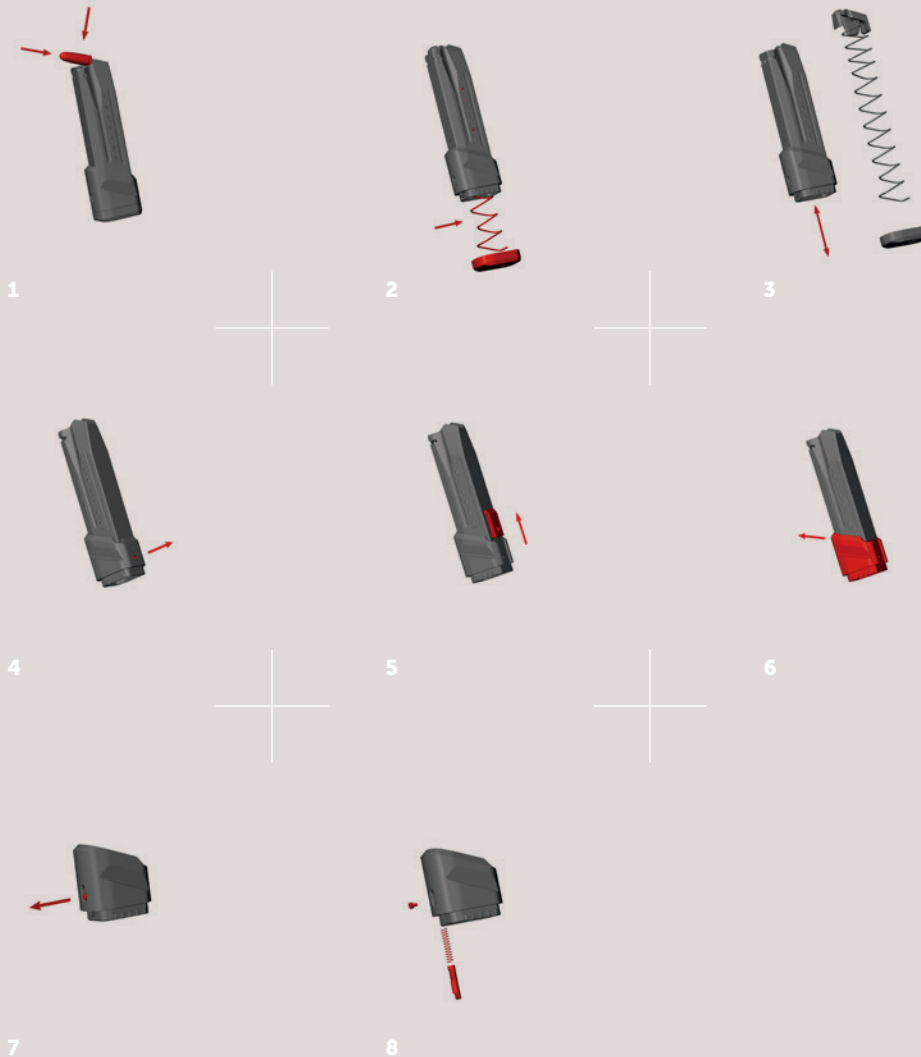
6

ALIEN 22rd EXTENDED MAGAZINE DISASSEMBLY INSTRUCTIONS

- **fig. 1** – move the slider on the front of the extension to its upper position (towards the feedlips of the magazine) and hold it in this position.
 Slide the magazine extension floorplate in the direction of the arrow, while making sure to keep a firm grasp on the floorplate. Be careful, as the magazine extension floorplate is under spring tension, and needs to be controlled during the disassembly process.
- **fig. 2** – With a firm grasp on the magazine extension floorplate, slowly ease the spring tension on the magazine extension floorplate and allow the magazine spring to decompress.
- **fig. 3** – Remove the magazine spring from the magazine body. Clean the interior of the body with a brush/cloth
 After cleaning, assemble the magazine in the reverse order of the steps above. Ensure the spring is correctly seated in the recess in the magazine extension floorplate before reassembly.

IF NEEDED, FOLLOW THE BELOW INSTRUCTIONS FOR COMPLETE DISASSEMBLY OF THE MAGAZINE EXTENSION:

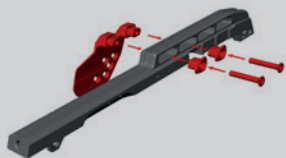
- **fig. 4** – loosen and remove the wedge screw (HEX key 1.5mm)
- **fig. 5** – slide the wedge out of the extension
- **fig. 6** – remove the extension from the magazine body in the direction of the arrow
- **fig. 7** – loosen and remove the slider screw (HEX key 1.5mm)
- **fig. 8** – remove the pin and spring.
 After disassembly, clean the parts and reassemble in the reverse order of the steps above. The tightening torque for both screws is 0.3Nm (0.22lb*ft), and all fasteners are secured with Loctite 242.
 (Note: Ensure that all fasteners are torqued to the appropriate specification before use)



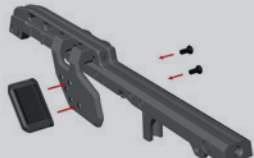
7

INSTRUCTIONS FOR MOUNTING THE LIMITED OPTICS THUMB REST

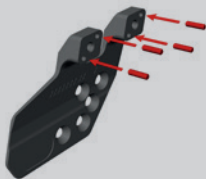
- Insert the four provided pins into the mounting face of the thumb rest (fig.1)
- Place the two provided plastic spacers on the protruding pins (fig.2)
- Mount the thumb rest support assembly on the Limited Optics rail with the two provided countersunk spacers and two M3x20 screws (fig.3). Use a T10 wrench to tighten the screws to a torque of 1.3Nm (0.96lb*ft)
- Attach the thumb rest to the thumb rest support assembly using two M3x8 screws (fig.4). Use a T10 wrench to tighten the screws to a torque of 1.3Nm (0.96lb*ft)
- The thumb rest can be adjusted to three different positions 1 / 2 / 3 (fig.5)
- The thumb rest assembly can be adjusted on the Limited Optics rail into eight different positions - A to H (fig.6)
- The thumb rest and thumb rest assembly's adjustments can be combined, for fine tuning the position of the thumb support.



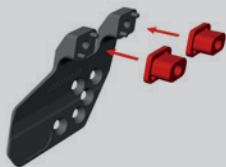
3



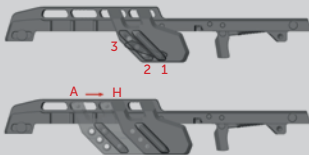
4



1



2



5 | 6



8

CLEANING AND MAINTENANCE

Clean the pistol after every use, as soon as possible after firing, and every time it has been exposed to moisture. In temperate climate, clean the pistol at least once a year; in adverse climatic conditions at least once a month.

CHAMBER AND BORE CLEANING

If the pistol has not been used yet or if only a few rounds have been fired, wipe the bore and the chamber with a dry cloth attached to a cleaning rod or use a boresnake cleaner. Keep changing the cleaning cloth until it comes out clean.

If the bore is heavily soiled, apply a little cleaning fluid to the bore and chamber with a brush, leave for about 10 minutes (time required for the cleaning fluid to work may vary) and clean with a brush. Dry the bore and the chamber with a clean cloth and check that all combustion residue has been removed. Repeat the procedure if necessary.

Slide the cleaning stick and brush away from the chamber to avoid damaging the muzzle. Before changing the direction of cleaning, push the brush through the entire length of the barrel. If you change the direction of movement with the brush in the barrel, it may get stuck.

CLEANING OTHER PARTS OF THE PISTOL

To clean the other parts of the pistol (including the outside surface of the barrel), use a dry cloth, a toothbrush, a brass brush, or a wooden scraper, and use a product supplied by the manufacturer or a similar product. However, never use the solution intended for cleaning the bore! It could remain in gaps between parts and cause corrosion after some time.

Make sure no parts of the cleaning cloth or brush bristles remain in any part of the pistol.

CLEANING THE PISTON SYSTEM OF THE PISTOL

The most important part of the pistol requiring regular maintenance is the piston system. As a result of the strong firing, deposits of combustion residue form in the piston chamber and on the actual piston. Neglecting the care of the firearm in the long term may reduce its functionality. Use the Carbon Remover supplied by the manufacturer to clean the piston and the piston chamber. First apply this agent onto the surface to be cleaned and leave to work for about 10 minutes. Then use the "L" cleaner supplied with the accessories and with a circular motion, clean the whole piston chamber (fig. 15). Use a brush to remove any impurities from the piston. If it is impossible to remove the carbon residue with a brush, metal tools may be used.

PRESERVATION OF THE FIREARM

After the bore, the chamber, and all the other accessible parts have been cleaned dry, wipe them with a cloth dampened in preservation oil or use spray oil. Wipe off the excess oil.

Wipe the bore dry before firing. If you use the pistol in low temperatures, remove oil from all accessible parts or use a special lubricant designed for such conditions.

Use preservation grease only when storing the pistol in adverse weather conditions for a long time, and remove it thoroughly before using it.

WASTE MANAGEMENT GUIDELINES

The materials used for the product and packaging, when used properly, do not have any negative effect on human health or the environment. In the event of the disposal of the product or its packaging, the metal parts (steel and non-ferrous metals), plastics, wood, paper, and cardboard are disposed of separately in containers designated for such purpose.



15



17



18



19



20



21

LIST OF PARTS

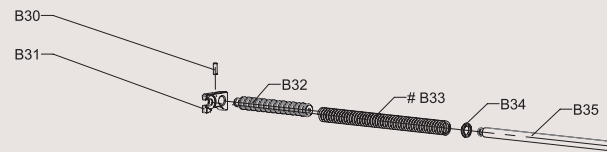
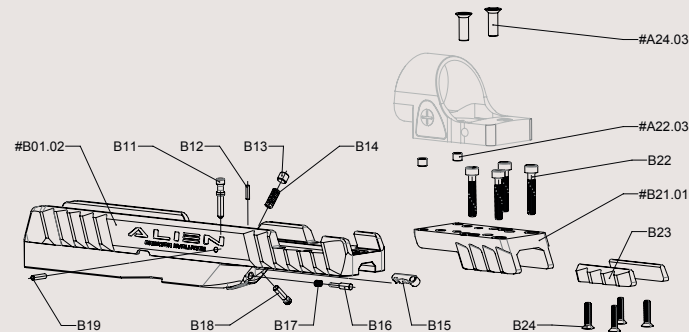
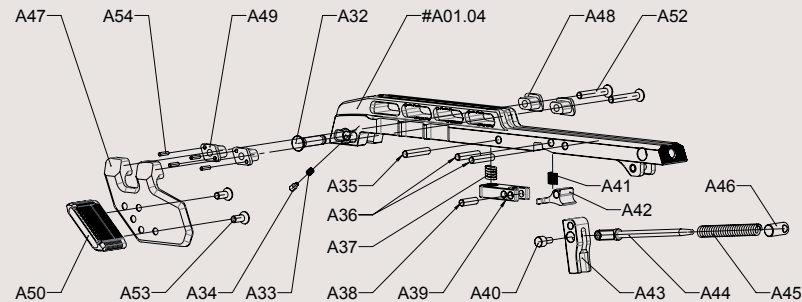
A

A01.01	UPPER RAIL *
A01.02	UPPER RAIL COLLIMATOR *
A01.03	UPPER RAIL-RETRO *
A01.04	UPPER RAIL-LIMITED OPTICS
A21.01	COLLIMATOR C-MORE *
A22.01	COLLIMATOR C-MORE PIN *
A22.02	COLLIMATOR LEUPOLD DELTAPOINT PIN *
A22.03	COLLIMATOR TRIJICON SRO / SHIELD RMS PIN
A23.01	WASHER C-MORE *
A24.01	SCREW C-MORE *
A24.02	SCREW LEUPOLD DELTAPOINT *
A24.03	SCREW TRIJICON SRO
A24.04	SCREW SHIELD RMS *
A32	DISASSEMBLY PIN
A33	FIRING PIN SPRING
A34	TENSION PIN
A35	PRESS PIN
A36	HAMMER PIN
A37	PRESS SPRING
A38	HEAD-PRESS PIN
A39	PRESS
A40	HAMMER BODY
A41	HAMMER CATCH SPRING
A42	HAMMER CATCH
A43	HAMMER
A44	HAMMER STUD
A45	HAMMER SPRING
A46	ROLLER
A47	THUMB REST MOUNT

A48	SPACER-A
A49	SPACER-B
A50	THUMB REST
A52	SCREW
A53	SCREW
A54	PIN

B

B01.01	SLIDE *
B01.02	SLIDE-RETRO
B11	TRIGGER BAR
B12	FIRING PIN PLUG
B13	EXTRACTOR SCREW
B14	EXTRACTOR SPRING
B15	EXTRACTOR
B16	FIRING PIN
B17	FIRING PIN SPRING
B18	EXTRACTOR PIN
B19	TRIGGER BAR SAFETY PIN
B21.01	MOUNT-AL
B21.02	MOUNT-STEEL *
B22	MOUNT RETRO SCREW
B23	STONES
B24	STONES SCREW
B30	PISTON PIN
B31	CLIP
B32	PISTON
B33.01	RECOIL SPRING
B33.02	RECOIL SPRING LIGHT *
B34	SPRING BASE
B35	GUIDE STUD



LIST OF PARTS

C

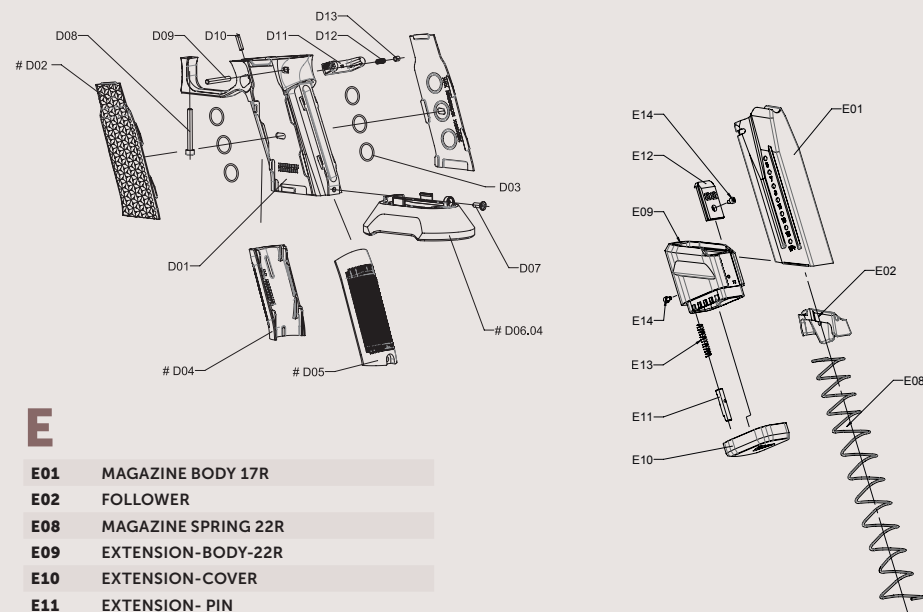
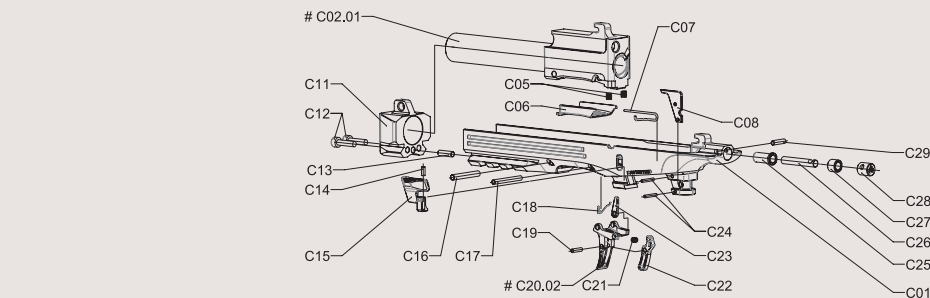
C01	FRAME
C02.01	BARREL ASSEMBLY
C02.02	BARREL TACTICAL ASSEMBLY *
C03	THREAD COVER *
C05	TRIGGER SPRING
C06	HEATCOVER
C07	SLIDE RELEASE/STOP SPRING
C08	EJECTOR
C11	HEAD
C12	HEAD SCREW
C13	HEAD PIN
C14	SLIDE RELEASE/STOP PIN
C15	SLIDE RELEASE/STOP
C16	BARREL PIN
C17	TRIGGER PIN
C18	DISCONNECTOR SPRING
C19	TRIGGER BAR SAFETY PIN
C20.01	TRIGGER *
C20.02	TRIGGER SMOOTH
C21	SAFETY SPRING
C22	TRIGGER SAFETY
C23	DISCONNECTOR
C24	EJECTOR PIN
C25	BUFFER COVER
C26	BUFFER
C27	BUFFER STOP
C28	BUFFER TUBE
C29	BUFFER PIN

D

D01	PISTOL GRIP AL
D02.01	LEFT RIGHT GRIP S G10 SET *
D02.02	LEFT RIGHT GRIP S AL SET *
D02.03	LEFT RIGHT GRIP S CARBON SET *
D02.04	LEFT RIGHT GRIP S TAPE SET *
D02.11	LEFT RIGHT GRIP M G10 SET
D02.12	LEFT RIGHT GRIP M AL SET *
D02.13	LEFT RIGHT GRIP M CARBON SET *
D02.14	LEFT RIGHT GRIP M TAPE SET *
D02.21	LEFT RIGHT GRIP L G10 SET *
D02.22	LEFT RIGHT GRIP L AL SET *
D02.23	LEFT RIGHT GRIP L CARBON SET *
D03	O-RING
D04.01	FRONTSTRAP M
D04.02	FRONTSTRAP M TAPE SET *
D05.01	BACKSTRAP M *
D05.02	BACKSTRAP M TAPE SET *
D05.03	BACKSTRAP L
D06.01	MAGWELL M *
D06.02	MAGWELL L *
D06.03	MAGWELL IPSC *
D06.04	MAGWELL XL
D07	GRIP SCREW
D08	PISTOL GRIP SCREW
D09	GRIP PIN
D10	MAGAZINE RELEASE PIN
D11	MAGAZINE CATCH
D12	MAGAZINE CATCH SPRING
D13	MAGAZINE CATCH SPRING PIN

* These items are not included in the package.

Many other interchangeable accessories are available for the Alien pistol, contact your distributor.



E

E01	MAGAZINE BODY 17R
E02	FOLLOWER
E08	MAGAZINE SPRING 22R
E09	EXTENSION-BODY-22R
E10	EXTENSION-COVER
E11	EXTENSION- PIN
E12	EXTENSION- INSERT-22R
E13	EXTENSION- SPRING
E14	SCREW

TROUBLESHOOTING

If the firearm is used and maintained properly, malfunctions rarely occur. However, if such a situation should arise, please observe the following instructions. If a malfunction occurs during firing, the risk of an accidental discharge is substantially higher. For this reason, when clearing any malfunctions, strictly follow all safety instructions. Keep the firearm pointed in a safe direction; do not turn the firearm towards yourself or towards other persons. Never place your hands in front of the muzzle! If you use your pistol for personal defence or duty, obtain some "training cartridges" and practice troubleshooting the malfunctions below.

Cause	Remedy
<p>Cartridge is not fed into the chamber or the slide is not locked</p> <p>Magazine is not fully inserted or is damaged.</p> <p>The firearm or the cartridges are fouled (dirty) or too much lubricant has been used.</p>	<p>Insert the magazine properly or use a different magazine.</p> <p>Clean the firearm and the cartridges dry or slightly lubricate.</p>
<p>Misfire</p> <p>Cartridge may be faulty.</p> <p>Firing pin hole is fouled or unsuitable lubricant has been used in low ambient temperature.</p> <p>The primer has been activated but there is no powder charge in the cartridge.</p>	<p>If the firearm does not fire after 1 minute, unload the firearm in a safe manner.</p> <p>Clean the firing pin hole and the firing pin or use a lubricant designed for low temperatures.</p> <p>Unload the firearm and check the bullet is not jammed in the barrel.</p>
<p>The cartridge case has not been ejected</p> <p>The chamber, extractor, or ammunition are dirty or unsuitable lubricant has been used in low temperatures.</p>	<p>Clean the firearm dry or lubricate slightly with suitable lubricant. Use clean or new ammunition.</p>

If the malfunction cannot be cleared in any manner described above, or if the firearm is damaged due to rough treatment or due to a fall, entrust it to a specialized workshop for inspection and repair.

WARRANTY TERMS AND CONDITIONS

Warranty is provided for this product to the following extent and under the following conditions:

SUBJECT OF WARRANTY AND THE WARRANTY PERIOD

The warranty covers only defects in material and defects caused by the manufacturer. If the product is used for the purpose for which it is intended and as described in the instruction manual, Laugo Arms Czechoslovakia s.r.o. guarantees faultless function of the product for the entire warranty period.

THE WARRANTY DOES NOT COVER:

- mechanical damage caused by the user or parts of the product affected by such damage
- damage and faults caused by negligent maintenance, failure to comply with the instruction manual and with the safety instructions, incorrect use, operating error, or unqualified intervention
- damage caused by storage in an unsuitable environment
- damage caused by using the product
- environmental damage
- defects that occurred due to modifications of the product and interference thereof performed outside Laugo Arms Czechoslovakia s.r.o. or outside an authorized service of Laugo Arms Czechoslovakia s.r.o., which resulted in a price reduction of the product
- defects caused by the use of non-original parts
- defects caused by ammunition not complying with the CIP or SAAMI regulations, or not approved by the manufacturer
- wear and tear caused by normal use or damage caused by rough handling
- products that have not complied with the terms and conditions of the warranty

The warranty period provided by Laugo Arms Czechoslovakia s.r.o. for all products is 24 months or 30,000 rounds. The warranty period begins from the day of the sale to the customer.

During the warranty period, all defects, unless specified in the list of exceptions in this warranty card, shall be removed free of charge. If any part of the product is replaced under warranty during the warranty period, it becomes part of the product and is therefore covered by the warranty until the warranty period ends.



The condition is that repairs are duly carried out by Laugo Arms Czechoslovakia s.r.o. or an authorized service. The warranty is extended for the period of time that the product was being repaired.

The manufacturer strictly recommends service check at the authorized service centre, or at the manufacturer's facility every 30,000 rounds with possible replacement of all worn-out parts. If this service check is not performed at the authorized service centre or directly at the manufacturer then the product loses all warranty and the manufacturer is not responsible for any damage or injury caused by the product beyond its service life.

WARRANTY TERMS AND CLAIMS

The customer is obliged to thoroughly inspect the product at the time of purchase, including the documentation, and to become familiar with its operation. In particular, the warranty certificate must be duly completed, stating the date of purchase, and proof of purchase (receipt) must be present.

The customer is entitled to have the defect removed during the warranty period by Laugo Arms Czechoslovakia s.r.o. as the manufacturer, as well as by any authorized service of Laugo Arms Czechoslovakia s.r.o., regardless of where the product was purchased.

The warranty claim can be made only after submitting the original warranty card with the name of the store, the date of sale, and the original proof of purchase of the product (receipt), which states the type designation of the product, date of sale and name of the store.

If the claimant has acquired the product from a previous owner during the warranty period and his or her name is not stated on the original proof of purchase (receipt), he or she may file a claim upon submitting an agreement on the assignment of rights ensuing from the warranty, concluded with the first customer. In the event of non-acknowledgment of the claim, Laugo Arms Czechoslovakia s.r.o. may claim compensation from the claimant for the costs associated with the claim procedure.

The period for settling a claim is 30 calendar days from the date of the claim being filed. A claim being filed means the physical handover/delivery of the product to an authorized service or to Laugo Arms Czechoslovakia s.r.o., unless agreed otherwise with the claimant.

Each warranty repair must be recorded in the warranty card.

Date of sale

Store stamp:



www.laugoarms.com

