



**ALIEN**  
INSTRUCTION MANUAL

## **TABLE OF CONTENTS**

INSTRUCTIONS FOR THE SAFE HANDLING OF PISTOL	2
PISTOL DESCRIPTION, TACTICAL AND TECHNICAL DATA	3
AMMUNITION	4
HANDLING THE PISTOL	4
STRIPPING AND ASSEMBLY INSTRUCTIONS	6
MOUNTING OF COLLIMATOR	9
MOUNTING OF STONES	9
CLEANING AND PRESERVATION	10
LIST OF PARTS	12
TROUBLESHOOTING	16
WARRANTY TERMS AND CONDITIONS	17

## 1. INSTRUCTIONS FOR THE SAFE HANDLING OF PISTOL

Read this instruction manual carefully and follow all the safety instructions warning you of possible risks connected with the use of this product. Should you ever lend or sell this firearm to another person, this instruction and maintenance manual must always be provided as well. The manual is also available in electronic format on the manufacturer's website.

When handling the pistol, always follow the safety instructions and treat it as if it were loaded. The manufacturer bears no responsibility for damages resulting from improper handling, interfering with the mechanism of the firearm, failure to follow the safety instructions or damage of the firearm due to the use of unsuitable ammunition. Before the first handling of the firearm, get thoroughly acquainted with this instruction and maintenance manual.

### **Avoid these dangerous activities in particular:**

- Never point the firearm at anything you do not intend to shoot at
- Always point in a safe direction even if the firearm is unloaded
- Always keep the pistol under control when in use and never leave it unattended
- Check the pistol before using it (barrel obstructions, corrosion, damage, etc.)
- **Do not use hand-loaded ammunition, use only original full metal jacket or semi-jacketed ammunition (FMJ, MJ, JHP, SP) of appropriate calibre and quality**
- Never use the pistol when under the influence of intoxicating substances (alcohol, drugs, etc.)
- Use glasses and ear protective equipment to protect your sight and hearing (shooting glasses, ear protectors, etc.)
- Do not put your finger on the trigger until you are ready to shoot
- Always consider the risks of the environment around (ricocheting, shooting in poor visibility, etc.)
- Always make sure that the pistol is unloaded before handing it over or taking it from another person
- Never tamper with the mechanism of the pistol or modify the pistol parts in any way
- If you are unsure about the correct functioning of the firearm or its safety, contact the authorized service centre
- Observe the rules and regulations of the shooting range or facility where you are using your pistol
- Store the pistol unloaded and duly secured against the misuse of other persons and keep it separate from the ammunition

### **The pistol has the following safety features:**

- Trigger safety
- Drop safety block
- Ultra-light firing pin
- Out-of-battery fire block
- Striker status indicator

### **Contact for the authorized service:**

Laugo Arms Czechoslovakia s.r.o., Pražská 9, Blansko 678 01, Czech Republic.

## 2. PISTOL DESCRIPTION TACTICAL AND TECHNICAL DATA

The ALIEN pistol is a semi-automatic firearm with a low bore axis and fixed barrel using the principle of gas piston delayed blowback, intended for shooting at a distance of up to 50 metres. It is equipped with trigger mechanism with a hybrid inverted hammerless system (HIHS). The pistol frame is divided, the upper functional part is made of high strength stainless steel, the lower gripping part is available in high quality aerospace grade aluminium composite or in polymer.

Characteristic properties:

- Lowest bore axis
- Gas piston delayed blowback
- Short and light trigger pull
- One-click exchangeable rails
- Non-reciprocating upper part of the slide with sights
- Bull Barrel type high accuracy fixed barrel
- Semi-integral slide with low centre of gravity
- Highly customizable modular design
- Exchangeable pistol grip
- Hybrid inverted hammerless system (HIHS)

### Tactical technical data

Length	210 mm/8.2"
Width	29 mm/ 1.1"
Height	148 mm/5.8"
Barrel length	124 mm/4.8"
Weight	1 009 g/2.2 lbs.
Weight with empty magazine	1 121 g/2.47 lbs.
Trigger pull adjustable	10 to 25 N * adjustable by manufacturer
Standard magazine capacity	17
Bore axis	1.7 mm below the line of grip axis
Number of replaceable slide rails	infinite
Recoil angle	½ compared to other models

### 3. AMMUNITION

Always use original ammunition complying with the standards for ammunition manufacturers and approved by CIP (Permanent International Commission for the Proof of Small Arms) or SAAMI (Sporting Arms and Ammunition Manufacturers' Institute). Using other ammunition may cause damage to the firearm or injury to the shooter.

**The manufacturer does not recommend firing an empty firearm (without cartridges) as it may lead to unwelcome wear of the firearm. For the so called "dry firing practice", the use of dummy rounds suitable for such purpose is recommended.**

The firearm has been designed to use only ammunition of the following type: FMJ, MJ, JHP, SP. Using any other kind of ammunition may lead to irregular functioning of the firearm and the manufacturer bears no responsibility for damages caused by the use of non-standard ammunition.

**Use of non-jacketed ammunition is strictly prohibited.**



### 4. HANDLING THE PISTOL

The pistol is equipped with an ambidextrous magazine release (may be fitted either side). Hold the pistol in your right (left) hand and push the magazine release with your thumb (*fig.1*). The magazine will release and drop out of the frame. Always comply with the principles of safe handling of a firearm:

**POINT IN A SAFE DIRECTION!**

1. Remove the magazine (*fig.1*)
2. Pull the slide fully to the rear and make sure the chamber is empty (*fig.2*)
3. Release the slide forward
4. Pull the trigger (dry fire)



Hold the magazine with the mouth pointing upwards. Place a cartridge on the front of the follower and push it down and back until it touches the rear wall of the magazine (*fig.3*). Place the next cartridge on the top of the previous one and insert it in the same manner. If there are several cartridges in the magazine already, use the thumb of the hand holding the magazine to push down on the column of cartridges.

The number of cartridges in the magazine may be monitored through the holes. Do not exceed the capacity of the magazine, it could lead to incorrect insertion of the first cartridge into the chamber.

Insert the loaded magazine into the pistol and check it has been secured by the magazine release. Grasp the pistol grip with one hand and grip the serrated part of the slide with the thumb and index finger of the other hand. Pull the slide to its rearmost position and release it. To cock the pistol, either the front (*fig.2*) or the rear serrations may be used. This causes the trigger and striking mechanisms to be drawn and a cartridge inserted into the chamber. The pistol is now ready to fire. When loading, always keep the pistol pointed in a safe direction!

After the last cartridge has been fired, the slide stays in its rear position. Remove the empty magazine and insert a loaded one. With your shooting hand, either push the slide stop downwards (*fig.5*) or use the other hand to pull the slide back and release it. The pistol is loaded again and ready to fire.

### **Unloading the pistol**

**POINT IN A SAFE DIRECTION!**

1. Remove the magazine
2. Pull the slide fully to the rear and make sure the chamber is empty
3. Release the slide forward
4. Pull the trigger (dry fire)

## 5. STRIPPING AND ASSEMBLY INSTRUCTIONS

POINT IN A SAFE DIRECTION!

- Remove the magazine (*fig.1*)
- MAKE SURE THERE ARE NO CARTRIDGES IN THE CHAMBER! (*fig.2*).  
Dry fire the pistol.
- Pull and release the slide so that the trigger mechanism is in the loaded position (*fig.2*).
- Push the front locking pin (*fig.6*) and pull it to its outermost position (*fig.7*).
- With the thumb of your shooting hand, push hard on the rear of the upper rail (*fig.8*) until it has been released.
- Slightly pull the upper rail forward with your thumb, the slide slightly pull backwards and up. (*fig.9*).
- Pull out the upper rail from slide (*fig.10*).
- Remove the piston and recoil spring assembly together with the slide (*fig.11*).





Stripping the pistol up to this point (*fig.12*) is sufficient for regular maintenance. After firing a large number of cartridges, strip the magazine as well.

Warning! Never release the hammer by pushing on the sear (*fig.13*). Also, always keep the hammer cocked when assembling the firearm.

**To assemble the pistol again, follow the reversed procedure:**

- Insert the recoil spring assembly (*fig.14*).
- Slide and upper rail turn upside down, pull the hammer on upper rail into loaded position. Slide on the upper rail into the slide with a thumb pressing on the hammer (*fig.15*).
- First, insert the slide with upper rail by hooking it onto the recoil assembly and then slightly pull it backwards and down (*fig.16*).
- Push the upper rail hard into its rearmost position (*fig.17*) – until you feel click.
- Push the front locking pin in (*fig.18*).



## Stripping the magazine

The magazine has a sliding base pad at the back. Move it to the disassembly position and then slightly push the baseplate forward. Then place your thumb above the baseplate to secure the spring and with your other hand, remove the baseplate completely. Exercise great caution during this disassembly to prevent injury by the ejected spring.

Do not disassemble any other parts of the pistol. If you believe the pistol requires adjustments or repairs, entrust it to a specialized workshop!

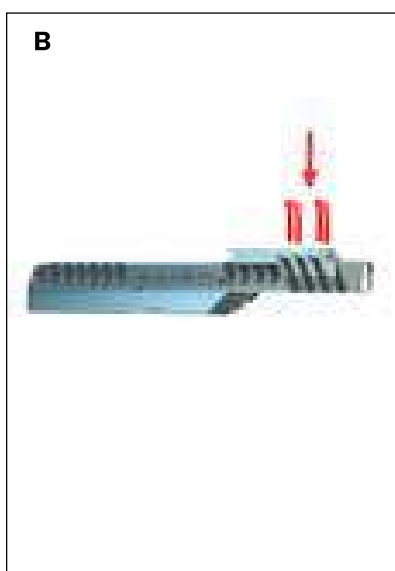
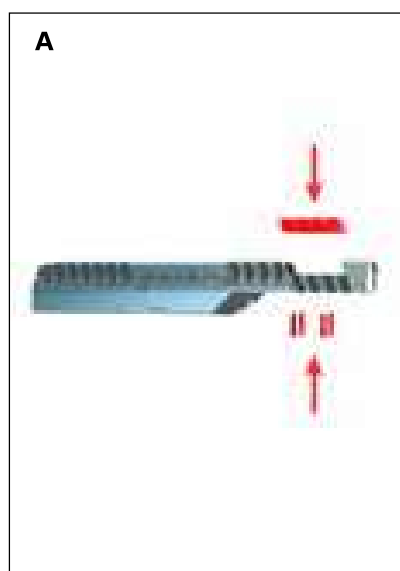
## 6. MOUNTING OF COLLIMATOR

List of collimators which can be used on retro upgrade mount with recommended screws:

- C-MORE RTS2 - M4x10
  - LEUPOLD DELTA POINT - M4x16
  - TRIJICON SRO - M4x11,5
  - SHIELD RMS - M4x8
- 
- Insert the pins into the mount.
  - Put the collimator on the mount, fit into the pins.
  - Glue the screws with Loctite 276.
  - Insert the screws into the red dot (*fig.C*), into the holes in the collimator.
  - Tighten the screws with tightening torque of 1.8Nm (*fig.C*).

## 7. MOUNTING OF STONES

- The slide is possible to use without the Retro mount, in that case you can install stones.
- Insert the stones on the slide (*fig.A*).
- From bottom side of slide insert the screws (*fig.A*).
- Tighten the screws with tightening torque of 0.8Nm.



## 8. CLEANING AND PRESERVATION

Clean the pistol after every use, as soon as possible after firing, and every time it has been exposed to moisture. In temperate climate, clean the pistol at least once a year, in adverse climatic conditions at least once a month.

### Cleaning the chamber and the bore

If the pistol has not been used yet or if only several rounds have been fired, wipe the bore and the chamber with a dry cloth attached to a cleaning rod or use a boresnake cleaner. Keep changing the cleaning cloth until it comes out clean.

If the bore is heavily fouled, use a brush to apply some cleaning fluid in the bore and the chamber, leave for about 10 minutes (the time needed for the cleaning fluid to take effect may vary) and clean with a brush. Dry the bore and the chamber with a clean cloth and check that all combustion residue has been removed. Repeat the procedure if necessary.

Insert the cleaning rod and the brush in the direction from the chamber in order not to damage the muzzle. Before changing the direction of cleaning, push the brush through the entire length of the barrel. If you change the direction of movement with the brush in the barrel, it may get stuck.

### Cleaning other parts of the pistol

To clean the other parts of the pistol (including the outside surface of the barrel), use a dry cloth, a toothbrush, brass brush or a wooden scraper, and use a product supplied by the manufacturer or a similar product. However, never use the solution intended for cleaning the bore! It could remain in gaps between parts and cause corrosion after some time.

Make sure no parts of the cleaning cloth or brush bristles remain in any part of the pistol.

### Cleaning the piston system of the pistol

**The most important part of the pistol requiring regular maintenance is the piston system. Due to heavy firing, deposits of combustion residue form in the piston chamber and on the actual piston. Neglecting the care of the firearm in the long term may reduce its functionality. Use the Carbon Remover supplied by the manufacturer to clean the piston and the piston chamber. First apply this agent onto the surface to be cleaned and leave to work for about 10 minutes. Then use the "L" cleaner supplied with the accessories and with a circular motion, clean the whole piston chamber (fig.19). Use a brush to remove any impurities from the piston. If it is impossible to remove the carbon residue with a brush, metal tools may be used.**

19



### **Preservation of the firearm**

After the bore, the chamber and all the other accessible parts have been cleaned dry, wipe them with a cloth dampened in preservation oil or use spray oil. Wipe off the excess oil.

Wipe the bore dry before firing. If you use the pistol in low temperatures, remove oil from all accessible parts or use a special lubricant designed for such conditions.

Use preservation grease only when storing the pistol in adverse weather conditions for a long time and remove it thoroughly before using it.

### **Waste management guidelines**

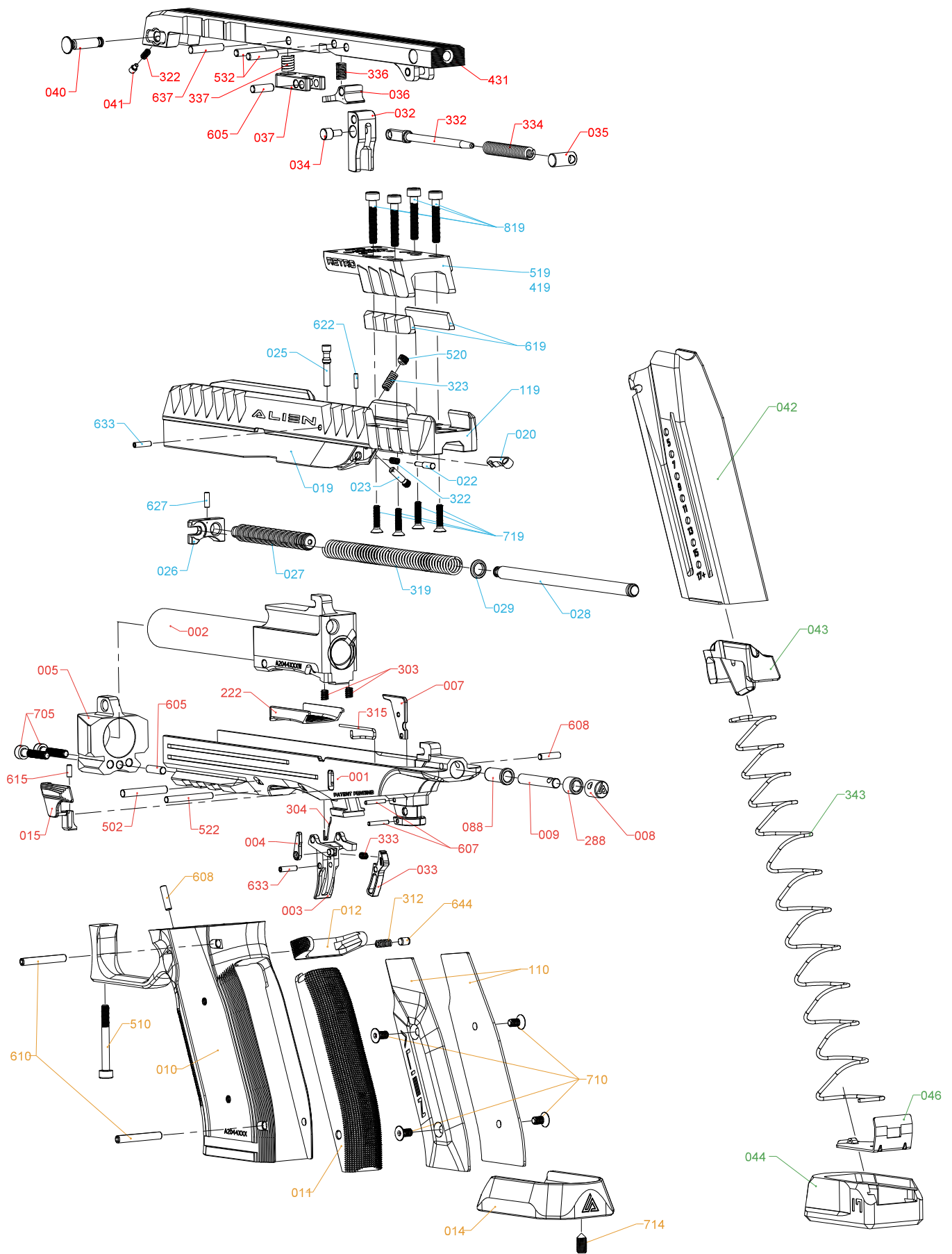
The materials used for the product and packaging do not have any negative effect on human health or the environment when used properly. In the event of the disposal of the product or its packaging, the metal parts (steel and non-ferrous metals), plastics, wood, paper and cardboard are disposed of separately in containers designated for such purpose.

**9. LIST OF PARTS**

No.	ITEM
<b>001</b>	FRAME
<b>002</b>	BARREL
<b>222</b>	HEATCOVER
<b>003</b>	TRIGGER
<b>303</b>	TRIGGER SPRING
<b>033</b>	TRIGGER SAFETY
<b>333</b>	SAFETY SPRING
<b>633</b>	TRIGGER BAR SAFETY PIN
<b>004</b>	DISCONNECTOR
<b>304</b>	DISCONNECTOR SPRING
<b>502</b>	BARREL PIN
<b>522</b>	TRIGGER PIN
<b>007</b>	EJECTOR
<b>607</b>	EJECTOR PIN
<b>008</b>	BUFFER TUBE
<b>088</b>	BUFFER COVER
<b>288</b>	BUFFER STOP
<b>009</b>	BUFFER
<b>608</b>	BUFFER PIN / MAGAZINE RELEASE PIN
<b>015</b>	SLIDE RELEASE/STOP
<b>315</b>	SLIDE RELEASE/STOP SPRING
<b>615</b>	SLIDE RELEASE/STOP PIN
<b>005</b>	HEAD
<b>705</b>	HEAD SCREW
<b>605</b>	HEAD PIN / PRESS PIN
<b>010</b>	PISTOL GRIP
<b>110</b>	LEFT/RIGHT GRIP
<b>710</b>	GRIP SCREW
<b>011</b>	GRIP
<b>012</b>	MAGAZINE CATCH
<b>312</b>	MAGAZINE CATCH SPRING
<b>644</b>	COLLIMATOR PIN / MAGAZINE CATCH SPRING PIN
<b>608</b>	BUFFER PIN / MAGAZINE RELEASE PIN
<b>510</b>	PISTOL GRIP SCREW
<b>610</b>	GRIP PIN

No.	ITEM
014	MAGWELL
714	MAGWELL SCREW
022	FIRING PIN
322	FIRING PIN SPRING
622	FIRING PIN PLUG
020	EXTRACTOR
023	EXTRACTOR PIN
323	EXTRACTOR SPRING
520	EXTRACTOR SCREW
025	TRIGGER BAR
633	TRIGGER BAR SAFETY PIN
026	CLIP
027	PISTON
028	GUIDE STUD
029	SPRING BASE
319	RECOIL SPRING
627	PISTON PIN
031	UPPER RAIL
032	HAMMER
332	HAMMER STUD
034	HAMMER BODY
035	ROLLER
036	HAMMER CATCH
334	HAMMER SPRING
336	HAMMER CATCH SPRING
532	HAMMER PIN
037	PRESS
605	HEAD-PRESS PIN
337	PRESS SPRING
637	PRESS PIN
040	DISASSEMBLY PIN
322	FIRING PIN SPRING
041	TENSION PIN
039	FRONT SIGHT
639	FRONT SIGHT PIN

No.	ITEM
000	ADJUSTABLE REAR SIGHT
131	UPPER RAIL C-MORE
231	HAMMER BUFFER
731	HAMMER BUFFER SCREW
644	COLLIMATOR MAGAZINE CATCH SPRING PIN
744	COLLIMATOR SCREW
745	COLLIMATOR SCREW PAD
444	COLLIMATOR DELTA
032	HAMMER
332	HAMMER STUD
034	HAMMER BODY
035	ROLLER
036	HAMMER CATCH
334	HAMMER SPRING
336	HAMMER CATCH SPRING
532	HAMMER PIN
037	PRESS
605	HEAD PIN / PRESS PIN
337	PRESS SPRING
637	PRESS PIN
040	DISASSEMBLY PIN
322	FIRING PIN SPRING
041	TENSION PIN
042	MAGAZINE BODY 17
043	FOLLOWER
044	MAGAZINE BASE 17
343	MAGAZINE SPRING 17
046	BASE PAD L



## 10. TROUBLESHOOTING

If the firearm is properly used and maintained, malfunctions occur rarely. However, if such a situation should arise, please observe the following instructions. If a malfunction occurs during firing, the risk of an accidental discharge is substantially higher. For this reason, when clearing any malfunctions, strictly follow all safety instructions. Keep the firearm pointed in a safe direction, do not turn the firearm towards yourself or towards other persons. Never place your hands in front of the muzzle! If you use your pistol for personal defence or duty, obtain some "training cartridges" and practice troubleshooting the malfunctions below.

	Cause	Remedy
<b>Cartridge is not fed into the chamber or the slide is not locked</b>	Magazine is not fully inserted or is damaged.	Insert the magazine properly or use a different magazine.
	The firearm or the cartridges are fouled (dirty) or too much lubricant has been used.	Clean the firearm and the cartridges dry or slightly lubricate.
<b>Misfire</b>	Cartridge may be faulty.	If the firearm does not fire after 1 minute, unload the firearm in a safe manner.
	Firing pin hole is fouled or unsuitable lubricant has been used in low ambient temperature.	Clean the firing pin hole and the firing pin or use a lubricant designed for low temperatures.
	The primer has been activated but there is no powder charge in the cartridge.	Unload the firearm and check the bullet is not jammed in the barrel.
<b>The cartridge case has not been ejected</b>	The chamber, extractor or ammunition are dirty or unsuitable lubricant has been used in low temperatures.	Clean the firearm dry or lubricate slightly with suitable lubricant. Use clean or new ammunition.

If the malfunction cannot be cleared in any manner described above, or if the firearm is damaged due to rough treatment or due to being dropped, entrust it to a specialized workshop for inspection and repair.

## **11. WARRANTY TERMS AND CONDITIONS**

Warranty is provided for this product to the following extent and under the following conditions:

### **Subject of warranty and the warranty period**

The warranty covers only defects in material and defects caused by the manufacturer. If the product is used for the purpose for which it is intended and as described in the instruction manual, Laugo Arms Czechoslovakia s.r.o. guarantees faultless function of the product for the whole warranty period.

### **The warranty does not cover:**

- mechanical damage caused by the user or parts of the product affected by such damage
- damage and faults caused by negligent maintenance, failure to comply with the instruction manual and with the safety instructions, by incorrect use, operating error or by unqualified intervention
- damage caused by storage in an unsuitable environment
- damage caused by using the product
- damage to the environment
- defects that resulted in the price reduction of the product, unless agreed otherwise
- modifications of the product and interference thereof performed outside Laugo Arms Czechoslovakia s.r.o. or outside an authorized service of Laugo Arms Czechoslovakia s.r.o.
- defects caused by the use of non-original parts
- defects caused by ammunition not complying with the CIP or SAAMI regulations, or not approved by the manufacturer
- wear and tear caused by normal use or damage caused by rough handling
- products that have not complied with the terms and conditions of the warranty

The warranty period provided by Laugo Arms Czechoslovakia s.r.o. for all products is 24 months or 30.000 rounds. The warranty period begins from the day of the sale to the customer.

During the warranty period, all defects, unless specified in the list of exceptions in this warranty card, shall be removed free of charge. If during the warranty period any part of the product is replaced under warranty, it becomes part of the product and is therefore covered by the warranty until the warranty period ends. The condition is that repairs are duly carried out by Laugo Arms Czechoslovakia s.r.o. or an authorized service. The warranty is extended for the period of time the product was being repaired.

The manufacturer strictly recommends service check at the authorised service center, or at the manufacturers facility every 30.000 rounds with possible replacement of all worn out parts. If this service check is not performed at the authorised service center or directly at the manufacturer than the product loses all warranty and manufacturer is not responsible for any damage or harm caused by product beyond its lifespan.









**Warranty terms and claims**

The customer is obliged to thoroughly inspect the product upon purchasing, including the documentation, and acquaint themselves with its operation. In particular, the warranty card must be properly filled in and showing the date of purchase, and the proof of purchase (the receipt) must be present.

The customer is entitled to have the defect removed during the warranty period by Laugo Arms Czechoslovakia s.r.o. as the manufacturer, as well as by any authorized service of Laugo Arms Czechoslovakia s.r.o., regardless of where the product was purchased.

A warranty claim may only be filed upon presenting the original warranty card bearing the name of the store, date of sale and the original proof of purchase of the product (receipt) showing the product type designation, date of sale and the name of the store.

If the claimant has acquired the product from a previous owner during the warranty period and his or her name is not stated on the original proof of purchase (receipt), he or she may file a claim upon submitting an agreement on the assignment of rights ensuing from the warranty, concluded with the first customer.

In the event the claim is not accepted, Laugo Arms Czechoslovakia s.r.o. may claim compensation from the claimant for the costs associated with the complaint procedure.

The period for settling a claim is 30 calendar days from the date of a claim being filed. A claim being filed means the physical handover/delivery of the product to an authorized service or to Laugo Arms Czechoslovakia s.r.o., unless agreed otherwise with the claimant.

A record of each warranty repair must be made in the warranty card.

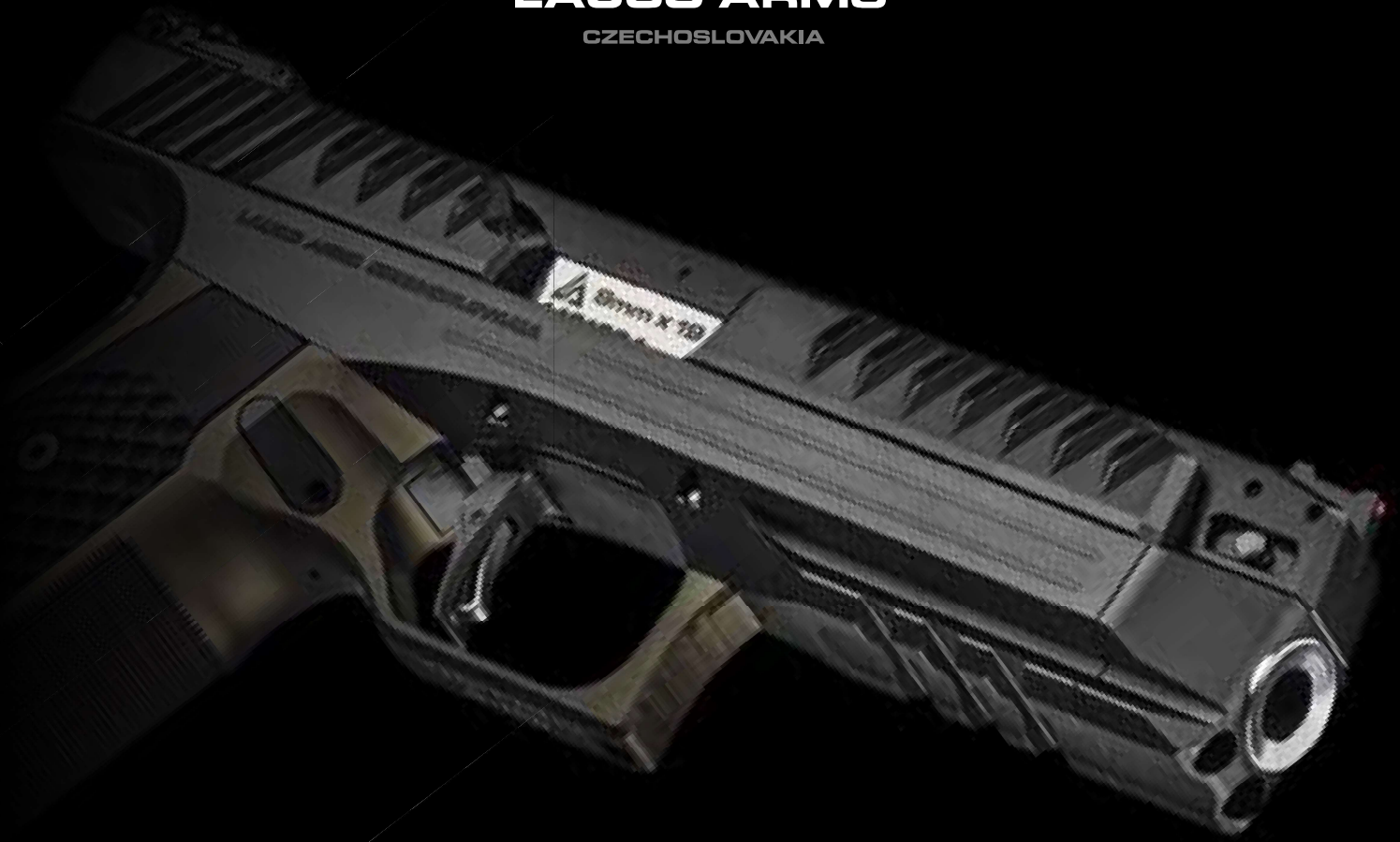
Date of sale

Store stamp:



**LAUGO ARMS**

CZECHOSLOVAKIA



FOR LATEST INFORMATION CHECK OUR  
FACEBOOK, INSTAGRAM OR YOUTUBE CHANNEL.



FACEBOOK



YOUTUBE



INSTAGRAM

WWW.LAUGOARMS.COM